

Table of Contents

CHCPI_CONSUMER_CHCIDD_1	1
CHCPI_CONSUMER_CHCIQ_1	5

Test case #13642 CHCPI_CONSUMER_CHCIDD_1

Test Summary

Keyword : CHCPI_CONSUMER_CHCIDD_1	Type : conformity assessment
Name : CHCPI_CONSUMER_CHCIDD_1	Peer Type : NO_PEER_TEST
Version : 2.0	Status : ready
Author : ycadoret	Verified by : ceoche
Date of last 2022-04-04 13:09:34.245355 by vhofman	

Short Description : CPI consumer as SUT must query CPI provider

Test Description

Special Instructions

This test case evaluates the capabilities of your system under test as a CH:CPI Community Portal Index Consumer. The goal of this test, is to send a valid request to fetch community information entries from the Community Portal Index Provider.

Note that this test is to be executed against the CPI Simulator.

Instructions to SIA testing laboratories

It is lab's responsibility to extract the SOAP payload from the simulator (logs) and to upload them in the test steps in Gazelle Test Management. Then, the SUT operator will be able to send them to EVSClient for validation.

Description

1- Prepare your system to query the CPI Simulator CIDD CH:CPI Provider.

Your query must contains a downloadRequest part with these required attributes (as in this following example) :

```
<downloadRequest xmlns="urn:ch:admin:bag:epr:2017" fromDate="2018-01-01T00:00:00.000Z" toDate="2018-01-31T23:59:59.999Z" />
```

- From your system, send EITHER of these queries :

1. Send a request to gather all the informations on modifications operated from the communities registered.
2. Send a query for the informations on the modifications operated for the community whose informations are provided [here](#) (file "CPIdata.ods")

Please note that you'll need the timestamp of the transaction to facilitate the recovery of the log of your request.

Validation of the request :

1. The monitor shall have loaded the request captured by CPI Simulator
2. Click on the play icon next to the file name, you will be redirected to EVSClient
3. Select validator "HPD" and extention "CH" and click on "Go" at the bottom of the page
4. Once the page of the validator opens, select **CH - Community Information Delta Download Request** in the drop-down list and click on "**Validate**";
5. When the validation report shows up, a pop-up raised. Confirm that you want the result of the validation to be sent back to Test Management.

Evaluation

The validation of your request by EVSClient must return **Passed**

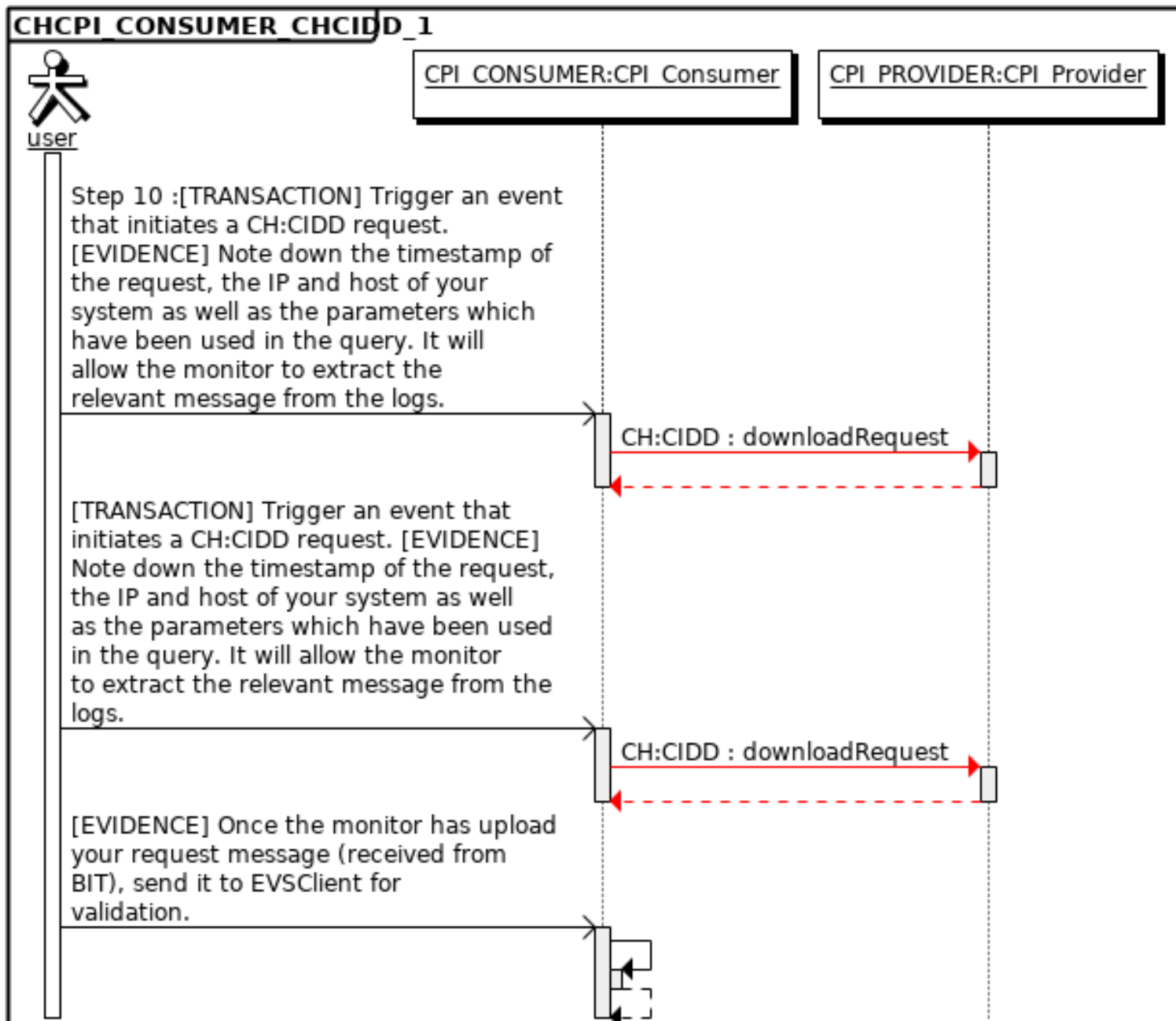
p { margin-top: 0.21cm; margin-bottom: 0.21cm; direction: ltr; line-height: 0.46cm; text-align: left; }p.western { font-family: "Times New Roman", serif; font-size: 12pt; }p.cjk { font-family: "Times New Roman"; font-size: 12pt; }p.cti { font-size: 11pt; }a:link { color: rgb(5, 99, 193); }p { margin-top: 0.21cm; margin-bottom: 0.21cm; direction: ltr; line-height: 0.46cm; text-align: left; }p.western { font-family: "Times New Roman", serif; font-size: 12pt; }p.cjk { font-family: "Times New Roman"; font-size: 12pt; }p.cti { font-size: 11pt; }a:link { color: rgb(5, 99, 193); }

Test Participants		
Role in test : CPI_CONSUMER (SUT)	Option : R	Nb of instances : 1
Actor	Profile	Option
CPI_Consumer	CH:CPI	NONE
Role in test : CPI_PROVIDER (SUT)	Option : R	Nb of instances : 1
Actor	Profile	Option
CPI_Provider	CH:CPI	NONE

Test Steps

Index	Initiator	Responder	Transaction	Message Type	Secured ?	Option	Description
10	CPI_CONS UMER	CPI_PROVID ER	CH:CIDD	downloadRequest	Yes	Required	Step 10 :[TRANSACTION] Trigger an event that initiates a CH:CIDD request. [EVIDENCE] Note down the timestamp of the request, the IP and host of your system as well as the parameters which have been used in the query. It will allow the monitor to extract the relevant message from the logs.
20	CPI_CONS UMER	CPI_PROVID ER	CH:CIDD	downloadRequest	Yes	Required	[TRANSACTION] Trigger an event that initiates a CH:CIDD request. [EVIDENCE] Note down the timestamp of the request, the IP and host of your system as well as the parameters which have been used in the query. It will allow the monitor to extract the relevant message from the logs.
30	CPI_CONS UMER	CPI_CONSU MER		none	No	Required	[EVIDENCE] Once the monitor has upload your request message (received from BIT), send it to EVSClient for validation.

Sequence Diagram



Test case #13643 CHCPI_CONSUMER_CHCIQ_1

Test Summary

Keyword : CHCPI_CONSUMER_CHCIQ_1 **Type :** conformity assessment
Name : CHCPI_CONSUMER_CHCIQ_1 **Peer Type :** NO_PEER_TEST
Version : 2.0 **Status :** ready
Author : ycadoret **Verified by :** ceoche
Date of last 2022-04-04 13:09:44.128627 by vhofman

Short Description : CH-CPI consumer as SUT must query CH-CPI provider

Test Description

Special Instructions

This test case evaluates the capabilities of your system under test as a CH:CPI Community Portal Index Consumer. The goal of this test, is to send a valid request to fetch community information entries from the Community Portal Index Provider.

Note that this test is to be executed against the CPI Simulator.

Instructions to SIA testing laboratories

It is lab's responsibility to extract the SOAP payload from the simulator (logs) and to upload them in the test steps in Gazelle Test Management. Then, the SUT operator will be able to send them to EVSClient for validation.

Description

- Prepare your system to queried the CPI Provider.

- From your system, send EITHER of these queries :

1. Send a request to gather all the informations from the communities registered.
2. Send a query for the community whose informations are provided [here](#) (file "CPIdata.ods")

Please note that you'll need the timestamp of the transaction to facilitate the recovery of the log of your request.

- Once the monitor has loaded the request log captured by the simulator in the test step section :

1. The monitor shall have loaded the request captured by CPI Simulator
2. Select validator "HPD" and extention "CH" and click on "Go" at the bottom of the page
3. Once the page of the validator opens, select **CH - Community Portal Index Request** in the drop-down list and click on "Validate";
4. When the validation report shows up, a pop-up raised. Confirm that you want the result of the validation to be sent back to Test Management.

Evaluation

The validation of your request by EVSClient must return **Passed**

Test Participants

Role in test : CPI_CONSUMER (SUT)		Option : R	Nb of instances : 1
Actor	Profile	Option	
CPI_Consumer	CH:CPI	NONE	

Role in test : CPI_PROVIDER (SUT)		Option : R	Nb of instances : 1
Actor	Profile	Option	
CPI_Provider	CH:CPI	NONE	

Test Steps							
Index	Initiator	Responder	Transaction	Message Type	Secured ?	Option	Description
10	CPI_CONS UMER	CPI_PROVID ER	CH:CIQ	batchRequest	Yes	Optional	<p>[TRANSACTION] : Send a CH:CIQ request for the informations of all communities.</p> <p>[EVIDENCE] Note down the timestamp of the request, the IP and host of your system as well as the parameters which have been used in the query. It will allow the monitor to extract the relevant message from the logs.</p>
15	CPI_CONS UMER	CPI_PROVID ER	CH:CIQ	batchRequest	Yes	Optional	<p>[TRANSACTION] : Send a CH:CIQ request for the informations of the provided exemple community.</p> <p>[EVIDENCE] Note down the timestamp of the request, the IP and host of your system as well as the parameters which have been used in the query. It will allow the monitor to extract the relevant message from the logs.</p>
20	CPI_CONS UMER	CPI_CONSU MER		none	No	Required	<p>[EVIDENCE] Once the monitor has upload your request message (received from BIT), validate them using EVSClient.</p>

Sequence Diagram

