

Table of Contents

CHXCA_INIT-GW_ITI-38	1
CHXCA_INIT-GW_ITI-39	5
CHXCA_RESP_GW_ITI-38	9
CHXCA_RESP_GW_ITI-38_INVALID	12
CHXCA_RESP_GW_ITI-39	14
CHXCA_RESP_GW_ITI-39_INVALID	17
XCA_INIT-GW_CONF	19

Test case #13460 CHXCA_INIT-GW_ITI-38

Test Summary

Keyword : CHXCA_INIT-GW_ITI-38	Type : conformity assessment
Name : CHXCA_INIT-GW_ITI-38	Peer Type : NO_PEER_TEST
Version : 1.3	Status : ready
Author : mtoudic	Verified by : aeschlimann
Date of last 2023-11-14 08:43:27.032436 by vhofman	

Short Description : This test is to verify the SUT capacity to query the metadatas of documents through an ITI-38 transaction to a XCA Responding Gateway.

Test Description

Special Instructions

In this test case, we will use GWT to send ITI-18 transactions to the SUT, which will then send the corresponding ITI-38 transactions to a simulator (XDSTools) acting as a Responding Gateway.

To perform this test, you'll need to follow the instructions listed in [XCA_INIT-GW_CONE](#).

Since your system will need to resolve the MPI-PID of the patient in the Gazelle community, you also need to make sure that your XCPD Initiating Gateway is configured properly.

To do so, configure your system under test to interact with [Patient Manager](#). The configuration details for interacting with the XCPD Responding Gateway are available under **XCPD > Responding Gateway**.

The Initiating Gateway actor is expected to act as a X-Service Provider. This test will also be used to assess this role when receiving an ITI-18 transaction. In order to do so, you'll need to follow the instructions from this test case :

[XUA_X-SERVICE-PROV_ITI-40](#)

Moreover, the Initiating Gateway actor is expected to act as a X-Service User. This test will also be used to assess this role when sending an ITI-38 transaction. In order to do so, you'll need to follow the instructions from this test case :

[XUA_X-SERVICE-USER_ITI-40](#)

Description

- Before anything, configure your system to be able to test its role as X-Service Provider, X-Service User and execute [XCA_INIT-GW_CONE](#).

- Make sure you have followed the instructions in the test case [XCA_INIT-GW_CONE](#) and that your XCPD Gateway is able to interact with Patient Manager.

- To initiate this test, a simulator will send a serie of four ITI-18 requests to your SUT (FindDocument query ; GetDocument query ; FindSubmissionSet query and GetSubmissionSet&Content query), using Gazelle Webservice Tester. To execute this test:

1. Access [Gazelle Webservice Tester](#) and log into the application;
2. Go to menu "Run";
3. Select the test project name **EPR XCA Initiating Gateway** from the drop-down list;
4. Select test suite **[ITI-18] Metadata queries TestSuite** by ticking the checkbox in front of its name;
5. Enter the URL of your SUT (shall be a secured endpoint)
6. Click on "Run" button
7. Wait for the script to complete its execution;

Take note of the time at which you initiated your transaction, it'll be helpful for the next step.

- Once your ITI-38 requests has been executed, you'll need to recover their logs from XDSTools :

- Go to [XDSTools7 homepage](#)
- At the top of the page, set the **Environment** to **ehealthsuisse** and the **Test Session** to **epr-testing** from the drop-down lists
- At the left side of the page, click on the "New Simulator Logs" option (in the "Toolkit" section)
- Select the simulator that participated in your transaction (here it's **epr-testing_for_init_gw_testing**)
- In the **Message** menu, pick the logs corresponding to your transaction using your IP and transaction time
- From the **Request Body** tab, copy the **Envelope** of your request in an xml file

- **Now to validate all your requests with the validation tool EVSClient :**

- In EVSClient, choose on the menu **EPR > XD* Metadata > Validate**
- Upload your XML message. Then, in Model Based Validation select: **CH XCA ITI-38 Cross Gateway Query - request** to validate your request
- Copy the permanent link to your validation in the corresponding test step

For each steps, upload a proof that your system has correctly retrieved the documents metadatas.

Evaluation

The monitor will check that you copied the link to this test instance to the corresponding test step of the test case [XUA_X-SERVICE-PROV_ITI-40](#) AND [XUA_X-SERVICE-USER_ITI-40](#).

The validations on EVSClient and GWT must be passed.

Test Participants

Test Participants		
Role in test	Option	Nb of instances
EPR_XCA_INIT_GATEWAY_SUT (SUT)	R	1
Actor	Profile	Option
INIT_GATEWAY	XCA	NONE

Test Participants

Actor	Profile	Option
X-SERV-PROV	XUA	NONE
X-SERV-USR	XUA	NONE

Role in test : EPR_XCA_RESP_GATEWAY_SIMU (Tool) **Option :** R **Nb of instances :** 1

Role in test : EPR_XDS.b_DOC_CONSUMER_SIMU (Tool) **Option :** R **Nb of instances :** 1

Test Steps

Index	Initiator	Responder	Transaction	Message Type	Secured ?	Option	Description
5	EPR_XCA_INIT_GATEWAY_SUT	EPR_XCA_INIT_GATEWAY_SUT		Evidence	No	Required	[OTHER_ACTION] : The system is configured to be able to register its audit messages.
9	EPR_XDS.b_DOC_CONSUMER_SIMU	EPR_XCA_INIT_GATEWAY_SUT	ITI-40	Provide X-User Assertion	Yes	Required	[TRANSACTION] : An ITI-40 transaction is send in parallel to each ITI-18 request
10	EPR_XDS.b_DOC_CONSUMER_SIMU	EPR_XCA_INIT_GATEWAY_SUT	ITI-18	RegistryStoredQuery	Yes	Required	[TRANSACTION] : The Document Consumer simulator sends a serie of ITI-18 queries.
29	EPR_XCA_INIT_GATEWAY_SUT	EPR_XCA_RESP_GATEWAY_SIMU	ITI-40	Provide X-User Assertion	Yes	Required	[TRANSACTION] : An ITI-40 transaction is send in parallel to each ITI-38 request
30	EPR_XCA_INIT_GATEWAY_SUT	EPR_XCA_RESP_GATEWAY_SIMU	ITI-38	FindSubmissionSets	Yes	Required	[TRANSACTION] : For each ITI-18 received, your SUT sends an ITI-38 to a Responding Gateway simulator
60	EPR_XCA_INIT_GATEWAY_SUT	EPR_XCA_INIT_GATEWAY_SUT		Evidence	No	Required	[OTHER_ACTION] : Retrieve the log of your request in XML format. [EVIDENCE] : Paste the permanent links to the validation on EVSClient and GWT

Test Steps

Index	Initiator	Responder	Transaction	Message Type	Secured ?	Option	Description
70	EPR_XCA_INIT_GATEWAY_SUT EPR_XCA_INIT_GATEWAY_SUT	EPR_XCA_INIT_GATEWAY_SUT EPR_XCA_INIT_GATEWAY_SUT		Evidence	No	Required	

[EVIDENCE] : The SUT proves that a link to this test instance has been added to both the XUA_X-SERVICE-PROV_ITI-40 test case and the XUA_X-SERVICE-USER_ITI-40 test case.

Sequence Diagram



Special Instructions

In this test case, we will use GWT to send ITI-43 transactions to the SUT, which will then send the corresponding ITI-39 transactions to a simulator (XDSTools) acting as a Responding Gateway.

To perform this test, you'll need to follow the instructions listed in [XCA_INIT-GW_CONF](#).

Since your system might need to resolve the MPI-PID of the patient in the Gazelle community, you also need to make sure that your XCPD Initiating Gateway is configured properly.

To do so, configure your system under test to interact with [Patient Manager](#). The configuration details for interacting with the XCPD Responding Gateway are available under **XCPD > Responding Gateway**.

The Initiating Gateway actor is expected to act as a X-Service Provider. This test will also be used to assess this role when receiving an ITI-43 transaction. In order to do so, you'll need to follow the instructions from this test case :

[XUA_X-SERVICE-PROV_ITI-40](#)

Moreover, the Initiating Gateway actor is expected to act as a X-Service User. This test will also be used to assess this role when sending an ITI-39 transaction. In order to do so, you'll need to follow the instructions from this test case :

[XUA_X-SERVICE-USER_ITI-40](#)

Description

- Before anything, configure your system to be able to test its role as X-Service Provider, X-Service User and follow the instructions from [XCA_INIT-GW_CONF](#).

- Make sure you have followed the instructions in the test case [XCA_INIT-GW_CONF](#) and that your XCPD Gateway is able to interact with Patient Manager.

- To initiate this test, a simulator will send a serie of ITI-43 request to your SUT, using Gazelle Webservice Tester. To execute this test:

1. Access [Gazelle Webservice Tester](#) and log into the application;
2. Go to menu "Run";
3. Select the test project name **EPR XCA Initiating Gateway** from the drop-down list;
4. Select test suite **[ITI-43] Document Set queries TestSuite** by ticking the checkbox in front of its name;
5. Enter the URL of your SUT (shall be a secured endpoint)
6. Click on "Run" button
7. Wait for the script to complete its execution;

Take note of the time at which you initiated your transaction, it'll be helpful for the next step.

- Once your ITI-39 requests has been executed, you'll need to recover their logs from XDSTools :

- Go to [XDSTools7 homepage](#)
- At the top of the page, set the **Environment** to **ehealthsuisse** and the **Test Session** to **epr-testing** from the drop-down lists
- At the left side of the page, click on the "New Simulator Logs" option (in the "Toolkit" section)
- Select the simulator that participated in your transaction (here it's **epr-testing_for_init_gw_testing**)
- In the **Message** menu, pick the logs corresponding to your transaction using your IP and transaction time
- From the **Request Body** tab, copy the **Envelope** of your request in an xml file

- **Now to validate all your requests with the validation tool EVSClient :**

- In EVSClient, choose on the menu **EPR > XD* Metadata > Validate**
- Upload your XML message. Then, in Model Based Validation select: **CH XCA ITI-39 Cross Gateway Retrieve - request** to validate your request
- Copy the permanent link to your validation in the corresponding test step

For each steps, upload a proof that your system has correctly retrieved the documents.

Evaluation

The monitor will check that you copied the link to this test instance to the corresponding test step of the test case [XUA_X-SERVICE-PROV_ITI-40](#) AND [XUA_X-SERVICE-USER_ITI-40](#).

The validations on EVSClient and GWT must be **Passed**.

Test Participants

Role in test : EPR_XCA_INIT_GATEWAY_SUT (SUT)			Option : R	Nb of instances : 1
Actor	Profile		Option	
INIT_GATEWAY	XCA		NONE	
X-SERV-PROV	XUA		NONE	
X-SERV-USR	XUA		NONE	

Test Participants

Role in test : EPR_XCA_RESP_GATEWAY_SIMU (Tool)

Option : R

Nb of instances : 1

Role in test : EPR_XDS.b_DOC_CONSUMER_SIMU (Tool)

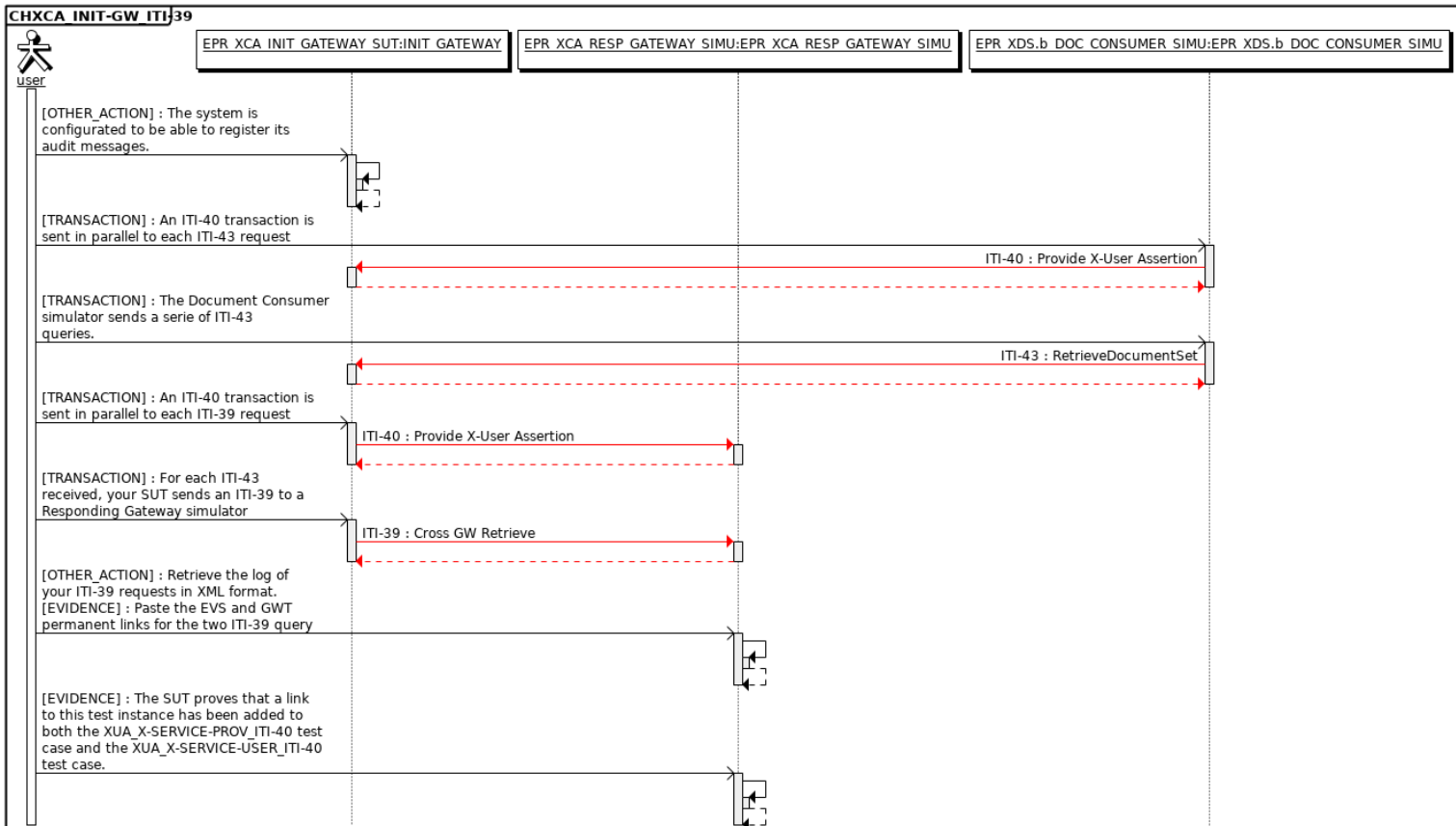
Option : R

Nb of instances : 1

Test Steps

Index	Initiator	Responder	Transaction	Message Type	Secured ?	Option	Description
5	EPR_XCA_INIT_GATEWAY_SUT	EPR_XCA_INIT_GATEWAY_SUT		None	No	Required	
[OTHER_ACTION] : The system is configured to be able to register its audit messages.							
9	EPR_XDS.b_DOC_CONSUMER_SIMU	EPR_XCA_INIT_GATEWAY_SUT	ITI-40	Provide X-User Assertion	Yes	Required	
[TRANSACTION] : An ITI-40 transaction is sent in parallel to each ITI-43 request							
10	EPR_XDS.b_DOC_CONSUMER_SIMU	EPR_XCA_INIT_GATEWAY_SUT	ITI-43	RetrieveDocument Set	Yes	Required	
[TRANSACTION] : The Document Consumer simulator sends a serie of ITI-43 queries.							
49	EPR_XCA_INIT_GATEWAY_SUT	EPR_XCA_RESP_GATEWAY_SIMU	ITI-40	Provide X-User Assertion	Yes	Required	
[TRANSACTION] : An ITI-40 transaction is sent in parallel to each ITI-39 request							
50	EPR_XCA_INIT_GATEWAY_SUT	EPR_XCA_RESP_GATEWAY_SIMU	ITI-39	Cross GW Retrieve	Yes	Required	
[TRANSACTION] : For each ITI-43 received, your SUT sends an ITI-39 to a Responding Gateway simulator							
60	EPR_XCA_RESP_GATEWAY_SIMU	EPR_XCA_RESP_GATEWAY_SIMU		Other Action - Evidence	No	Required	
[OTHER_ACTION] : Retrieve the log of your ITI-39 requests in XML format. [EVIDENCE] : Paste the EVS and GWT permanent links for the two ITI-39 query							
70	EPR_XCA_RESP_GATEWAY_SIMU	EPR_XCA_RESP_GATEWAY_SIMU		Other Action - Evidence	No	Required	
[EVIDENCE] : The SUT proves that a link to this test instance has been added to both the XUA_X-SERVICE-PROV_ITI-40 test case and the XUA_X-SERVICE-USER_ITI-40 test case.							

Sequence Diagram



Test case #13449 CHXCA_RESP_GW_ITI-38

Test Summary

Keyword : CHXCA_RESP_GW_ITI-38 **Type :** conformity assessment
Name : CHXCA_RESP_GW_ITI-38 **Peer Type :** NO_PEER_TEST
Version : 1.2 **Status :** ready
Author : aeschlimann **Verified by :** wbars
Date of last : 2023-11-14 08:48:37.492964 by vhofman

Short Description : This test is to verify the SUT capacity to provide the metadatas of documents through an ITI-38 transaction from a XCA Initiating Gateway.

Test Description

Special Instructions

In this test case, we will test the ITI-38 transaction initiated by a simulator acting as a XCA Initiating Gateway.

The documents in the simulators that will be used for the queries will be created during the test, you just need to configure your system with the corresponding endpoint to get the metadata :

https://ehealthsuisse.ihe-europe.net:10443/xdstools7/sim/epr-testing_for_init_gw_testing/reg/sq

The Responding Gateway actor is expected to act as a X-Service Provider. This test will also be used to assess this role when receiving an ITI-38 transaction. In order to do so, you'll need to follow the instructions from this test case :

[XUA_X-SERVICE-PROV_ITI-40](#)

Description

- Before anything, configure your system to be able to test its role as X-Service Provider.

- The requests will be sent to your SUT from Gazelle Webservice Tester. To execute this test:

1. Access [Gazelle Webservice Tester](#) and log into the application;
2. Go to menu "Run";
3. Select the test project name **EPR XCA Responding Gateway** from the drop-down list;
4. Select test suite **ITI-38 Cross_Gateway_Query TestSuite** by ticking the checkbox in front of its name;
5. Enter the URL of your system under test endpoint (shall be a secured endpoint)
6. Click on "Run" button
7. Wait for the script to complete its execution;
8. When the script stops, copy the permanent link of the execution to the test step in Gazelle Test Management

The conformance of the responses sent back by your system shall be assessed. In Gazelle Webservice Tester, [for the following test steps], validate the message in EVSClient. To do so:

1. Click on the play icon next to the response type;
2. You have been redirected to EVSClient, select XDS-CH in EPR group and click on the "Go" button;
3. Once the page of the validator opens, select the appropriate entry in the drop-down list and click on "Validate";
4. When the validation report shows up, a pop-up raises for returning the validation report to GWT, click on "OK";

Evaluation

The monitor will check that you copied the link to this test instance to the corresponding test step of the test case [XUA_X-SERVICE-PROV_ITI-40](#).

The validations on EVS Client and GWT must return "Passed".

The responses returned for each query must return the requested metadata according to the request type (LeafType/ObjectRef) .

Test Participants

Role in test : EPR_XCA_INIT_GATEWAY_SIMU (Tool)	Option : R	Nb of instances : 1
--	-------------------	----------------------------

Role in test : EPR_XCA_RESP_GATEWAY_SUT (SUT)	Option : R	Nb of instances : 1
--	-------------------	----------------------------

Actor	Profile	Option
RESP_GATEWAY	XCA	NONE

Test Participants

Actor	Profile	Option
X-SERV-PROV	XUA	NONE
X-SERV-USR	XUA	NONE

Role in test : EPR_XDS.b_DOC_REGISTRY_SIMU (Tool) **Option :** R **Nb of instances :** 1

Test Steps

Index	Initiator	Responder	Transaction	Message Type	Secured ?	Option	Description
5	EPR_XCA _RESP_G ATEWAY_ SUT	EPR_XCA_R ESP_GATE WAY_SUT		None	No	Required	[OTHER_ACTION] : The system is configured to be able to register its audit messages.
9	EPR_XCA _INIT_GAT EWAY_SI MU	EPR_XCA_R ESP_GATE WAY_SUT	ITI-40	Provide X-User Assertion	Yes	Required	[TRANSACTION] : An ITI-40 transaction is send in parallel to each ITI-38 request.
10	EPR_XCA _INIT_GAT EWAY_SI MU	EPR_XCA_R ESP_GATE WAY_SUT	ITI-38	CrossGatewayQu ery	Yes	Required	[TRANSACTION] : The simulator send ITI-38 requests to the SUT that will gather the requested informations from the corresponding registry and send them back.
20	EPR_XCA _RESP_G ATEWAY_ SUT	EPR_XCA_R ESP_GATE WAY_SUT		None	No	Required	[EVIDENCE] : The SUT provide the links to the validation of the messages on GWT.
30	EPR_XCA _RESP_G ATEWAY_ SUT	EPR_XCA_R ESP_GATE WAY_SUT		None	No	Required	[EVIDENCE] : The SUT proves that a link to this test instance has been added to the XUA_X-SERVICE-PROV_ITI-40 test case.

Sequence Diagram



Test case #13447 CHXCA_RESP_GW_ITI-38_INVALID

Test Summary

Keyword : CHXCA_RESP_GW_ITI-38_INVALID **Type :** conformity assessment
Name : CHXCA_RESP_GW_ITI-38_INVALID **Peer Type :** NO_PEER_TEST
Version : 1.1 **Status :** ready
Author : aeschlimann **Verified by :** wbars
Date of last 2023-11-14 08:49:37.021753 by vhofman

Short Description : This test is to verify the SUT capacity to provide the correct error messages in response to a flawed ITI-38 transaction formulated by an XCA Initiating Gateway.

Test Description

Special Instructions

In this test case, we will test the ITI-38 transaction initiated by a simulator acting as a XCA Initiating Gateway.

The documents in the simulators that will be used for the queries will be created during the test, you just need to configure your system with the corresponding endpoint to get the metadata :

https://ehealthswiss.ihe-europe.net:10443/xdstools7/sim/epr-testing_for_init_gw_testing/reg/sq

Description

The requests will be sent to your SUT from Gazelle Webservice Tester. To execute this test:

1. Access [Gazelle Webservice Tester](#) and log into the application;
2. Go to menu "Run";
3. Select the test project name **EPR XCA Responding Gateway** from the drop-down list;
4. Select test suite **ITI-38 Cross Gateway Query TestSuite - invalid cases** by ticking the checkbox in front of its name;
5. Enter the URL of your system under test endpoint (shall be a secured endpoint)
6. Click on "Run" button
7. Wait for the script to complete its execution;
8. When the script stops, copy the permanent link of the execution to the test step in Gazelle Test Management

The conformance of the responses sent back by your system shall be assessed. In Gazelle Webservice Tester, [for the following test steps], validate the message in EVSClient. To do so:

1. Click on the play icon next to the response type;
2. You have been redirected to EVSClient, select XDS-CH in EPR group and click on the "Go" button;
3. Once the page of the validator opens, select the appropriate entry in the drop-down list and click on "Validate";
4. When the validation report shows up, a pop-up raises for returning the validation report to GWT, click on "OK";

Evaluation

The validations on EVS Client and GWT must return "Passed".

The responses returned for each query MUST NOT return the requested metadata according to the request type (LeafType/ObjectRef) .

Test Participants

Role in test : EPR_XCA_INIT_GATEWAY_SIMU (Tool) **Option :** R **Nb of instances :** 1

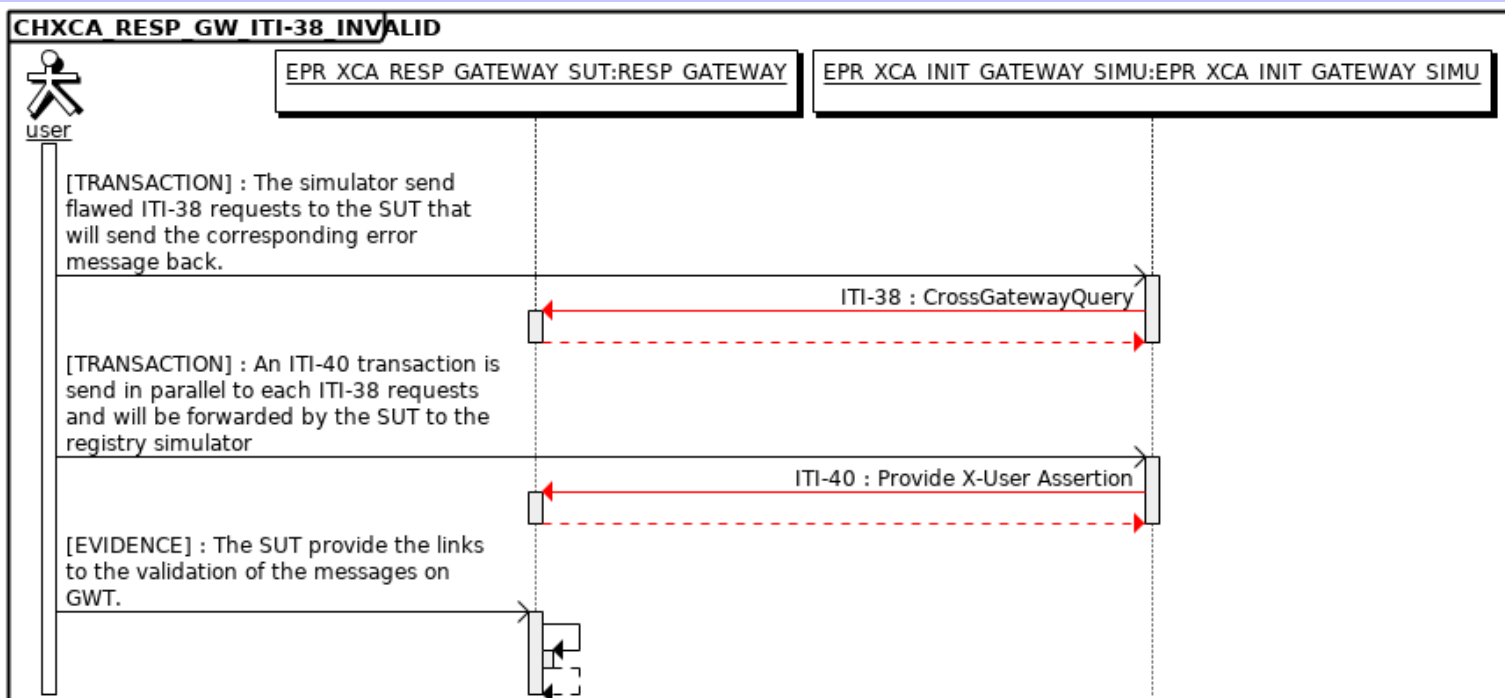
Role in test : EPR_XCA_RESP_GATEWAY_SUT (SUT) **Option :** R **Nb of instances :** 1

Actor	Profile	Option
RESP_GATEWAY	XCA	NONE
X-SERV-PROV	XUA	NONE
X-SERV-USR	XUA	NONE

Test Steps

Index	Initiator	Responder	Transaction	Message Type	Secured ?	Option	Description
10	EPR_XCA_INIT_GATEWAY_SIMU	EPR_XCA_RESP_GATEWAY_SUT	ITI-38	CrossGatewayQuery	Yes	Required	[TRANSACTION] : The simulator send flawed ITI-38 requests to the SUT that will send the corresponding error message back.
15	EPR_XCA_INIT_GATEWAY_SIMU	EPR_XCA_RESP_GATEWAY_SUT	ITI-40	Provide X-User Assertion	Yes	Required	[TRANSACTION] : An ITI-40 transaction is send in parallel to each ITI-38 requests and will be forwarded by the SUT to the registry simulator
20	EPR_XCA_RESP_GATEWAY_SUT	EPR_XCA_RESP_GATEWAY_SUT		None	No	Required	[EVIDENCE] : The SUT provide the links to the validation of the messages on GWT.

Sequence Diagram



Test case #13446 CHXCA_RESP_GW_ITI-39

Test Summary

Keyword : CHXCA_RESP_GW_ITI-39
Name : CHXCA_RESP_GW_ITI-39
Version : 1.3
Author : aeschlimann
Date of last : 2023-11-14 08:50:30.382206 by vhofman
Type : conformity assessment
Peer Type : NO_PEER_TEST
Status : ready
Verified by : aeschlimann

Short Description : This test is to verify the SUT capacity to provide documents through an ITI-39 transaction in response to a XCA Initiating Gateway.

Test Description

Special Instructions

In this test case, we will test the ITI-39 transaction initiated by a simulator acting as a XCA Initiating Gateway.

The documents in the simulators that will be used for the queries will be created during the test, you just need to configure your system with the corresponding informations to get the metadata :

[ITI-43] : https://ehealthsuisse.ihe-europe.net:10443/xdstools7/sim/epr-testing_for_init_gw_testing/rep/ret

repositoryUniqueID : 1.1.4567332.1.75

The Responding Gateway actor is expected to act as a X-Service provider. This test will also be used to assess this role for ITI-39 transaction. In order to do so, you'll need to follow the instructions from this test case :

[XUA_X-SERVICE-PROV_ITI-40](#)

Description

- Before anything, configure your system to be able to test its role as X-Service Provider.

The requests will be sent to your SUT from Gazelle Webservice Tester. To execute this test:

1. Access [Gazelle Webservice Tester](#) and log into the application;
2. Go to the menu "Run";
3. Select the test project name **EPR XCA Responding Gateway** from the drop-down list;
4. Select test suite **ITI-39 Cross Gateway Retrieve TestSuite** by ticking the checkbox in front of its name;
5. Enter the URL of your system under test endpoint (shall be a secured endpoint)
6. Click on "Run" button
7. Wait for the script to complete its execution;
8. When the script stops, copy the permanent link of the execution to the test step in Gazelle Test Management

The conformance of the responses sent back by your system shall be assessed. In Gazelle Webservice Tester, [for the following test steps], validate the message in EVSClient. To do so:

1. Click on the play icon next to the response type;
2. You have been redirected to EVSClient, select XDS-CH in EPR group and click on the "Go" button;
3. Once the page of the validator opens, select the appropriate entry in the drop-down list and click on "Validate";
4. When the validation report shows up, a pop-up raises for returning the validation report to GWT, click on "OK";

Evaluation

The monitor will check that you copied the link to this test instance to the corresponding test step of the test case [XUA_X-SERVICE-PROV_ITI-40](#).

The validations on EVS Client and GWT must return "Passed".
The responses returned for each query must return the requested documents.

Test Participants

Role in test	Option	Nb of instances
EPR_XCA_INIT_GATEWAY_SIMU (Tool)	R	1

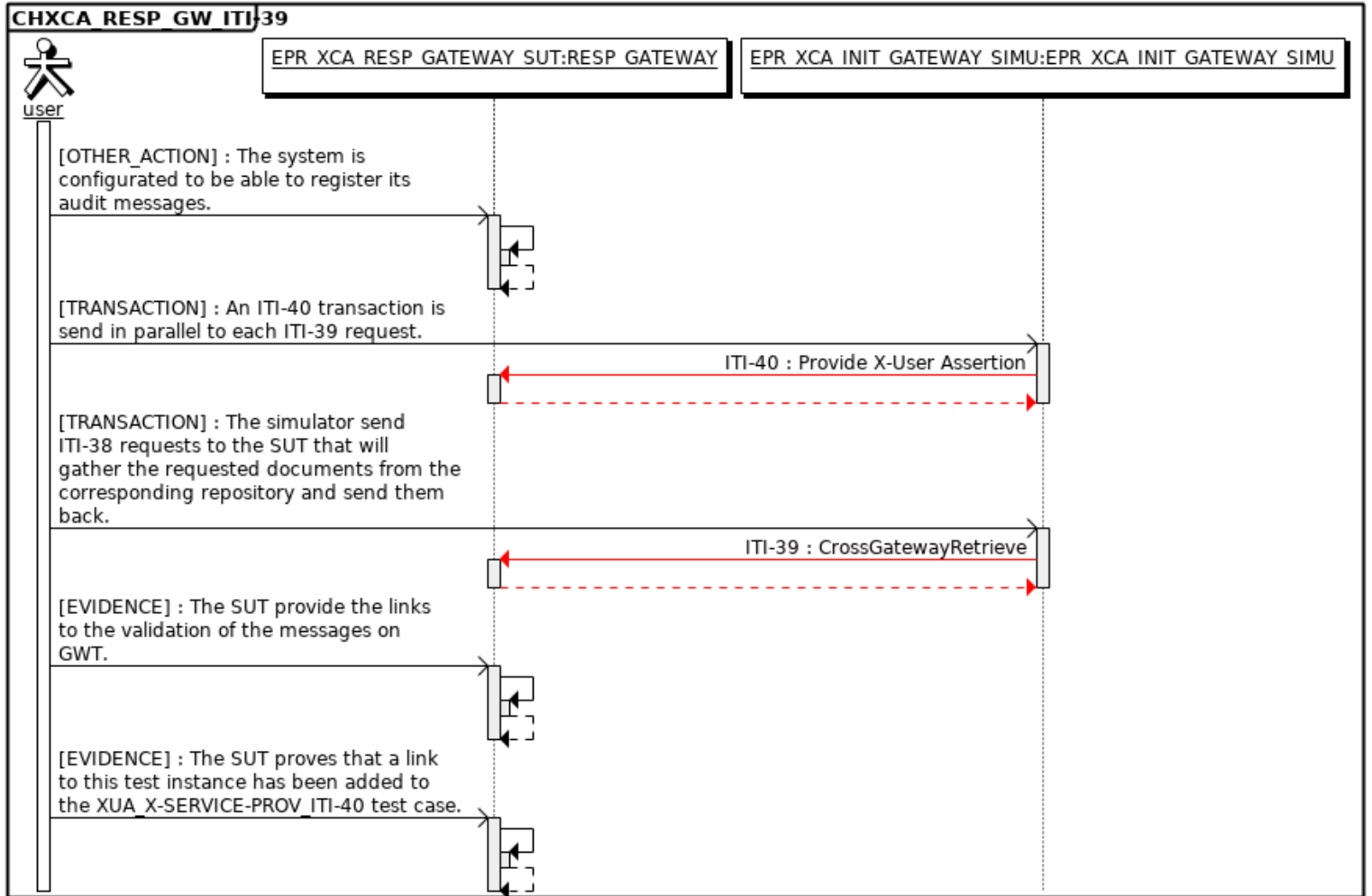
Test Participants

Role in test : EPR_XCA_RESP_GATEWAY_SUT (SUT)		Option : R	Nb of instances : 1
Actor	Profile	Option	
RESP_GATEWAY	XCA	NONE	
X-SERV-PROV	XUA	NONE	
X-SERV-USR	XUA	NONE	

Test Steps

Index	Initiator	Responder	Transaction	Message Type	Secured ?	Option	Description
5	EPR_XCA _RESP_G ATEWAY_ SUT	EPR_XCA_R ESP_GATE WAY_SUT		None	No	Required	[OTHER_ACTION] : The system is configured to be able to register its audit messages.
9	EPR_XCA _INIT_GAT EWAY_SI MU	EPR_XCA_R ESP_GATE WAY_SUT	ITI-40	Provide X-User Assertion	Yes	Required	[TRANSACTION] : An ITI-40 transaction is send in parallel to each ITI-39 request.
10	EPR_XCA _INIT_GAT EWAY_SI MU	EPR_XCA_R ESP_GATE WAY_SUT	ITI-39	CrossGatewayRet rieve	Yes	Required	[TRANSACTION] : The simulator send ITI-38 requests to the SUT that will gather the requested documents from the corresponding repository and send them back.
20	EPR_XCA _RESP_G ATEWAY_ SUT	EPR_XCA_R ESP_GATE WAY_SUT		None	No	Required	[EVIDENCE] : The SUT provide the links to the validation of the messages on GWT.
30	EPR_XCA _RESP_G ATEWAY_ SUT	EPR_XCA_R ESP_GATE WAY_SUT		None	No	Required	[EVIDENCE] : The SUT proves that a link to this test instance has been added to the XUA_X-SERVICE-PROV_ITI-40 test case.

Sequence Diagram



Test case #13448 CHXCA_RESP_GW_ITI-39_INVALID

Test Summary

Keyword : CHXCA_RESP_GW_ITI-39_INVALID **Type :** conformity assessment
Name : CHXCA_RESP_GW_ITI-39_INVALID **Peer Type :** NO_PEER_TEST
Version : 1.3 **Status :** ready
Author : aeschlimann **Verified by :** wbars
Date of last : 2023-11-14 08:51:46.004537 by vhofman

Short Description : This test is to verify the SUT capacity to send the correc error messages in response to a flawed ITI-39 transaction from a XCA Initiating Gateway.

Test Description

Special Instructions

In this test case, we will test the ITI-39 transaction error messages, initiated by a simulator acting as a XCA Initiating Gateway.

The document stored in the repository simulator will be generated during the test, you'll need to configure your system with the following data to request the document :

[ITI-43] : https://ehealthsuisse.ihe-europe.net:10443/xdstools7/sim/epr-testing_for_init_gw_testing/rep/ret

repositoryUniqueID : 1.1.4567332.1.75

Description

The requests will be sent to your SUT from Gazelle Webservice Tester. To execute this test:

1. Access [Gazelle Webservice Tester](#) and log into the application;
2. Go to the menu "Run";
3. Select the test project name **EPR XCA Responding Gateway** from the drop-down list;
4. Select test suite **ITI-39 Cross Gateway Retrieve TestSuite - invalid cases** by ticking the checkbox in front of its name;
5. Enter the URL of your system under test endpoint (shall be a secured endpoint)
6. Click on "Run" button
7. Wait for the script to complete its execution;
8. When the script stops, copy the permanent link of the execution to the test step in Gazelle Test Management

The conformance of the responses sent back by your system shall be assessed. In Gazelle Webservice Tester, [for the following test steps], validate the message in EVSClient. To do so:

1. Click on the play icon next to the response type;
2. You have been redirected to EVSClient, select XDS-CH in EPR group and click on the "Go" button;
3. Once the page of the validator opens, select the appropriate entry in the drop-down list and click on "Validate";
4. When the validation report shows up, a pop-up raises for returning the validation report to GWT, click on "OK";

Evaluation

The validations on EVS Client and GWT must return "Passed".

The responses returned for each query MUST NOT return the requested documents.

Test Participants

Role in test : EPR_XCA_INIT_GATEWAY_SIMU (Tool)	Option : R	Nb of instances : 1
--	-------------------	----------------------------

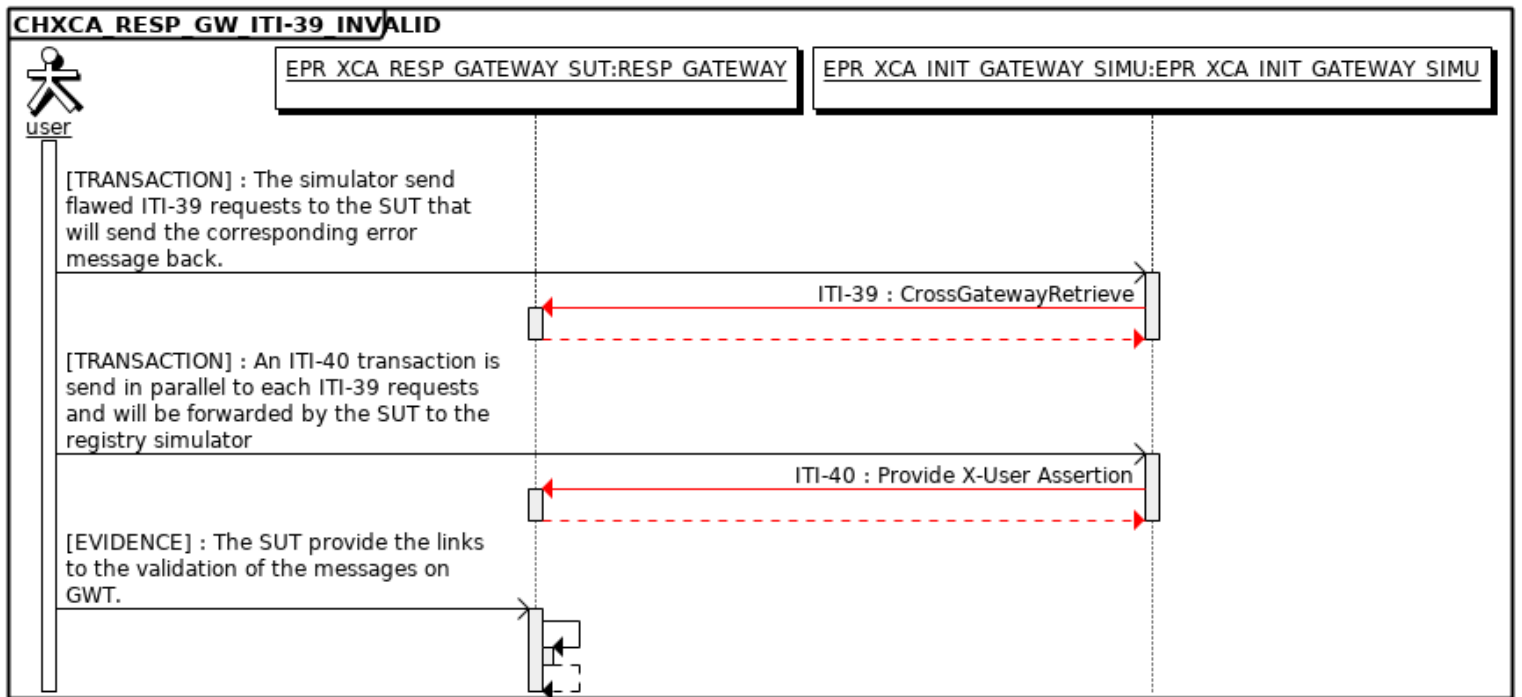
Role in test : EPR_XCA_RESP_GATEWAY_SUT (SUT)	Option : R	Nb of instances : 1
--	-------------------	----------------------------

Actor	Profile	Option
RESP_GATEWAY	XCA	NONE
X-SERV-PROV	XUA	NONE
X-SERV-USR	XUA	NONE

Test Steps

Index	Initiator	Responder	Transaction	Message Type	Secured ?	Option	Description
10	EPR_XCA_INIT_GATEWAY_SIMU	EPR_XCA_RESP_GATEWAY_SUT	ITI-39	CrossGatewayRetrieve	Yes	Required	[TRANSACTION] : The simulator send flawed ITI-39 requests to the SUT that will send the corresponding error message back.
15	EPR_XCA_INIT_GATEWAY_SIMU	EPR_XCA_RESP_GATEWAY_SUT	ITI-40	Provide X-User Assertion	Yes	Required	[TRANSACTION] : An ITI-40 transaction is send in parallel to each ITI-39 requests and will be forwarded by the SUT to the registry simulator
20	EPR_XCA_RESP_GATEWAY_SUT	EPR_XCA_RESP_GATEWAY_SUT		None	No	Required	[EVIDENCE] : The SUT provide the links to the validation of the messages on GWT.

Sequence Diagram



Test case #13445 XCA_INIT-GW_CONF

Test Summary

Keyword : XCA_INIT-GW_CONF **Type :** conformity assessment
Name : XCA_INIT-GW_CONF **Peer Type :** NO_PEER_TEST
Version : 1.2 **Status :** ready
Author : aeschlimann **Verified by :** aeschlimann
Date of last : 2020-02-11 10:17:27.564936 by aeschlimann

Short Description : Description of the data and configuration needed for the tests of the XCA Initiating Gateway actor.

Test Description

Description

The following informations are informative for a content consumer.

The content consumer SUT MUST use the endpoints to query and retrieve documents from the simulator. The other metadata are here for the queries you'll send.

endpoint for [ITI-38] : https://ehealthsuisse.ihe-europe.net:10443/xdstools7/sim/epr-testing_for_init_gw_testing/rg/xcq

endpoint for [ITI-39] : https://ehealthsuisse.ihe-europe.net:10443/xdstools7/sim/epr-testing_for_init_gw_testing/rg/xcr

Patient EPR-SPID (Patient Nilesch Wittwer-Christen) : `p { margin-bottom: 0.25cm; line-height: 115%; } a:link { }761337610411265304^^^SPID&2.16.756.5.30.1.127.3.10.3&ISO`

Repository Unique ID : 1.1.4567332.1.75

Home Community ID : urn:oid:1.1.4567334.1.6

Evaluation

This test is purely informative and doesn't necessitate any evaluation.

Test Participants

Role in test : EPR_XCA_INIT_GATEWAY_SUT (SUT)

Option : R

Nb of instances : 1

Actor	Profile	Option
INIT_GATEWAY	XCA	NONE
X-SERV-PROV	XUA	NONE
X-SERV-USR	XUA	NONE

Test Steps

Index	Initiator	Responder	Transaction	Message Type	Secured ?	Option	Description
-------	-----------	-----------	-------------	--------------	-----------	--------	-------------

Sequence Diagram

