

Table of Contents

| | |
|-----------------------------|---|
| CHHPD_PROV_INFO_CONS_ITI-58 | 1 |
| CHHPD_PROV_INFO_DIR_ITI-58 | 3 |
| CHHPD_PROV_INFO_DIR_ITI-59 | 5 |
| CHHPD_PROV_INFO_SRC_ITI-59 | 7 |

Test case #13293 CHHPD_PROV_INFO_CONS_ITI-58

Test Summary

Keyword : CHHPD_PROV_INFO_CONS_ITI-58 **Type :** conformity assessment
Name : CHHPD_PROV_INFO_CONS_ITI-58 **Peer Type :** NO_PEER_TEST
Version : 1.0 **Status :** ready
Author : wbars **Verified by :** NicolasBailliet
Date of last : 2019-09-04 17:09:47.123954 by wbars

Short Description : Provider Info Consumer ITI-58 HPD query request on HPD Simulator Provider Info Directory message validation using EVSClient

Test Description

Special Instructions

Your Provider Information Consumer is asked to initiate an ITI-58 request on the HPD Simulator Provider Information Directory.

You will use the Gazelle EVSClient to validate DSML messages created by your system.

These messages are applicable across many IHE profiles. The messages you validate will depend upon the profile/actor pairs supported by your test system.

Description

Access the [Gazelle HPD Simulator](#) application :

- From the HPD Simulator user interface, select **Simulators > Provider Information Directory > Configuration**
- Send an ITI-58 Provider Information Query from your system to the Provider Information Directory of HPD Simulator

For each step, you are requested to provide the permanent link to the message exchanged with the simulator. Those are available from the menu HL7 messages. To facilitate your search, you can filter by SUT IP address in "Initiator" column. Once you have found your message,

- Click on the play icon next to the request message type to trigger the validation of the message sent by your system. We expect the outcome of the validation to be PASSED.
- Right-click on the magnifying glass icon (last column) and copy/paste the permanent link in the test step using the "Add link" feature.
- Upload a screenshot of the result received by your system, demonstrating that your system correctly integrates the response from the simulator.

Evaluation

The validation of your request in EVSClient must have the status of **PASSED**.

The screenshot you upload must demonstrate the correct integration of the simulator's response in your system.

Test Participants

Role in test : CH_HPD_PROV_INFO_CONS (SUT)

Option : R

Nb of instances : 1

| Actor | Profile | Option |
|----------------|---------|--------|
| PROV_INFO_CONS | CH:HPD | NONE |

Role in test : HPD_SIMULATOR (Tool)

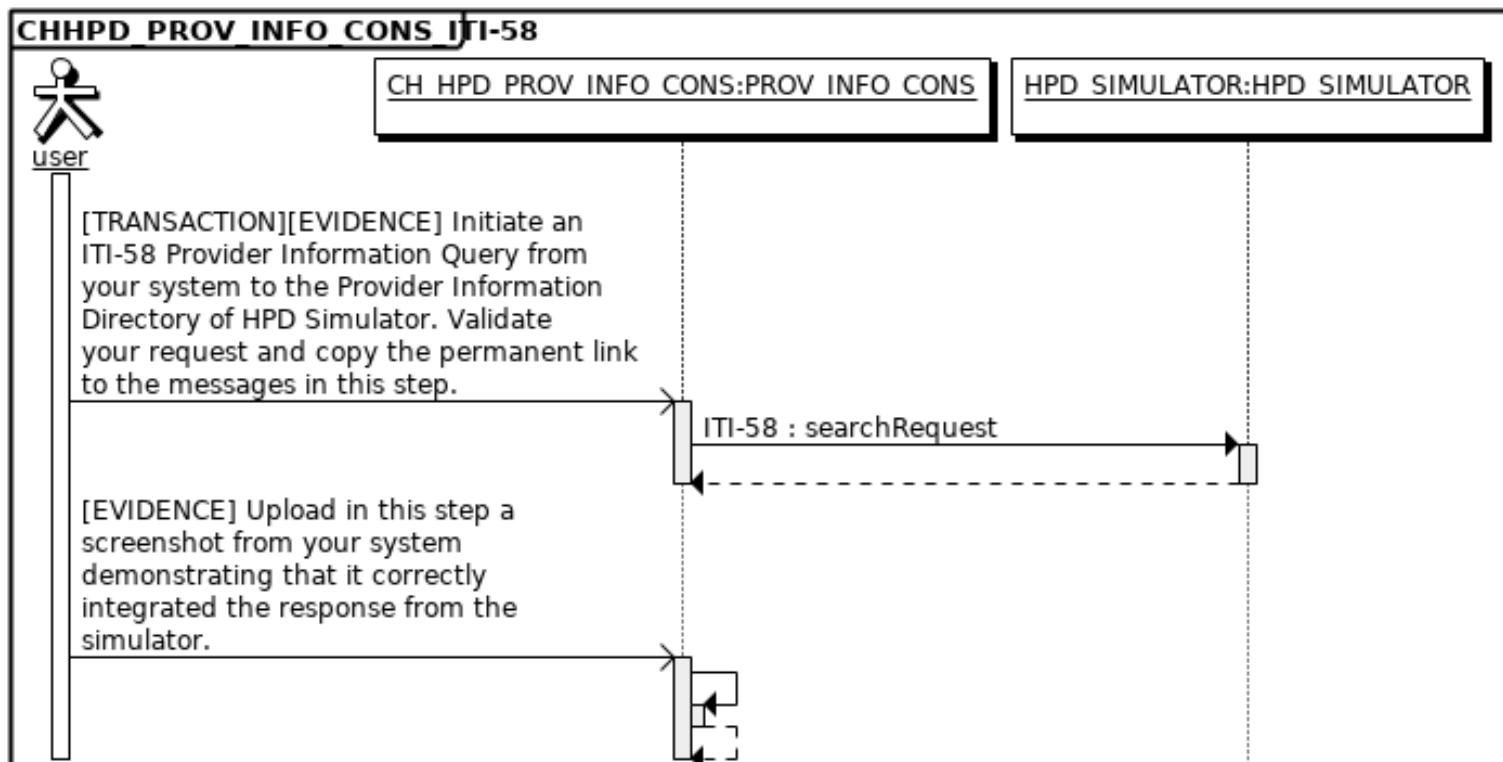
Option : R

Nb of instances : 1

Test Steps

| Index | Initiator | Responder | Transaction | Message Type | Secured ? | Option | Description |
|-------|--------------------------|--------------------------------|-------------|---------------|-----------|----------|--|
| 10 | CH_HPDPROV_INF O_CONS | HPD_SIMULATOR | ITI-58 | searchRequest | No | Required | [TRANSACTION][EVIDENCE] Initiate an ITI-58 Provider Information Query from your system to the Provider Information Directory of HPD Simulator. Validate your request and copy the permanent link to the messages in this step. |
| 30 | CH_HPDPROV_INF O_CONS | CH_HPDPROV_INF OV_INFO_CONS | | None | No | Required | [EVIDENCE] Upload in this step a screenshot from your system demonstrating that it correctly integrated the response from the simulator. |

Sequence Diagram



Test case #13295 CHHPD_PROV_INFO_DIR_ITI-58

Test Summary

Keyword : CHHPD_PROV_INFO_DIR_ITI-58 **Type :** conformity assessment
Name : CHHPD_PROV_INFO_DIR_ITI-58 **Peer Type :** NO_PEER_TEST
Version : 1.0 **Status :** ready
Author : wbars **Verified by :** NicolasBailliet
Date of last : 2021-06-15 11:17:28.507406 by vhofman

Short Description : An ITI-58 Provider Information Query initiated from HPD Simulator to your system. HPD query response message validation using EVSClient

Test Description

Special Instructions

You are asked to initiate an **ITI-58 Provide Information Query** from HPD Simulator, acting as Provide Information Consumer, to your system. The Response produced by your system will then have to be validated successfully using EVS Client.

Description

Access the [Gazelle HPD Simulator](#) application :

- If not already done, add your system in **SUT Configuration**
- From the Patient Manager user interface, select **Simulators > Provider Information Consumer**
- Send an ITI-58 Provider Information Query from HPD Simulator to your system

You are requested to provide the permanent link to the message exchanged with the simulator. Once the simulator has received the response from your system, a report is displayed at the bottom of the page. Scroll down to this section, ,

1. Click on the play icon next to the response message type to trigger the validation of the message sent by your system. We expect the outcome of the validation to be PASSED.
2. Right-click on the magnifying glass icon (last column) and copy/paste the permanent link in the test step using the "Add link" feature.

Evaluation

The validation of your response in EVSClient must be **PASSED**. The response must be consistent with the search criteria from the query.

Test Participants

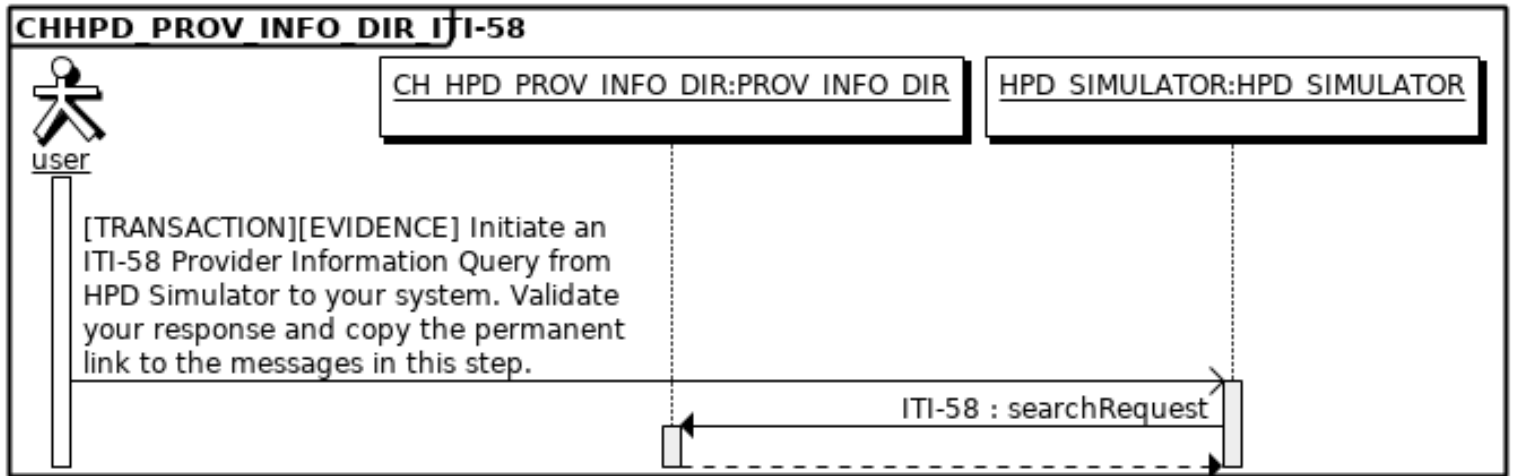
| Role in test : CH_HPDPROVINFO_DIR (SUT) | | Option : R | Nb of instances : 1 |
|---|---------|------------|---------------------|
| Actor | Profile | Option | |
| PROV_INFO_DIR | CH:HPD | NONE | |

| Role in test : HPD_SIMULATOR (Tool) | | Option : R | Nb of instances : 1 |
|-------------------------------------|--|------------|---------------------|
|-------------------------------------|--|------------|---------------------|

Test Steps

| Index | Initiator | Responder | Transaction | Message Type | Secured ? | Option | Description |
|-------|---------------|--------------------|-------------|---------------|-----------|----------|---|
| 10 | HPD_SIMULATOR | CH_HPDPROVINFO_DIR | ITI-58 | searchRequest | No | Required | [TRANSACTION][EVIDENCE] Initiate an ITI-58 Provider Information Query from HPD Simulator to your system. Validate your response and copy the permanent link to the messages in this step. |

Sequence Diagram



Test case #13297 CHHPD_PROV_INFO_DIR_ITI-59

Test Summary

Keyword : CHHPD_PROV_INFO_DIR_ITI-59 **Type :** conformity assessment
Name : CHHPD_PROV_INFO_DIR_ITI-59 **Peer Type :** NO_PEER_TEST
Version : 1.0 **Status :** ready
Author : wbars **Verified by :** NicolasBailliet
Date of last : 2019-09-04 10:54:20.776286 by wbars

Short Description : An ITI-59 Provider Information Feed initiated from HPD Simulator to your system. HPD query response message validation using EVSClient

Test Description

Special Instructions

You are asked to initiate an **ITI-59 Provide Information Feed** from HPD Simulator, acting as Provide Information Consumer, to your system.

The Response produced by your system will then have to be validated successfully using EVS Client.

Description

Access the [Gazelle HPD Simulator](#) application :

- If not already done, add your system in **SUT Configuration**
- From the HPD Simulator user interface, select **Simulators --> Provider Information Source**
- Send an ITI-59 Provider Information Feed from HPD Simulator to your system

You are requested to provide the permanent link to the message exchanged with the simulator. Once the simulator has received the response from your system, a report is displayed at the bottom of the page. Scroll down to this section, ,

1. Click on the play icon next to the response message type to trigger the validation of the message sent by your system. We expect the outcome of the validation to be PASSED.
2. Right-click on the magnifying glass icon (last column) and copy/paste the permanent link in the test step using the "Add link" feature.
3. Upload a screenshot of the result received by your system, demonstrating that your system correctly integrates the request from the simulator

Evaluation

The validation of your response in EVSClient must be **PASSED**.
Your system must correctly integrate the request from the simulator.

Test Participants

| Role in test : CH_HPDPROVINFO_DIR (SUT) | | | Option : R | Nb of instances : 1 |
|---|---------|--------|------------|---------------------|
| Actor | Profile | Option | | |
| PROV_INFO_DIR | CH:HPD | NONE | | |
| Role in test : HPD_SIMULATOR (Tool) | | | Option : R | Nb of instances : 1 |

Test Steps

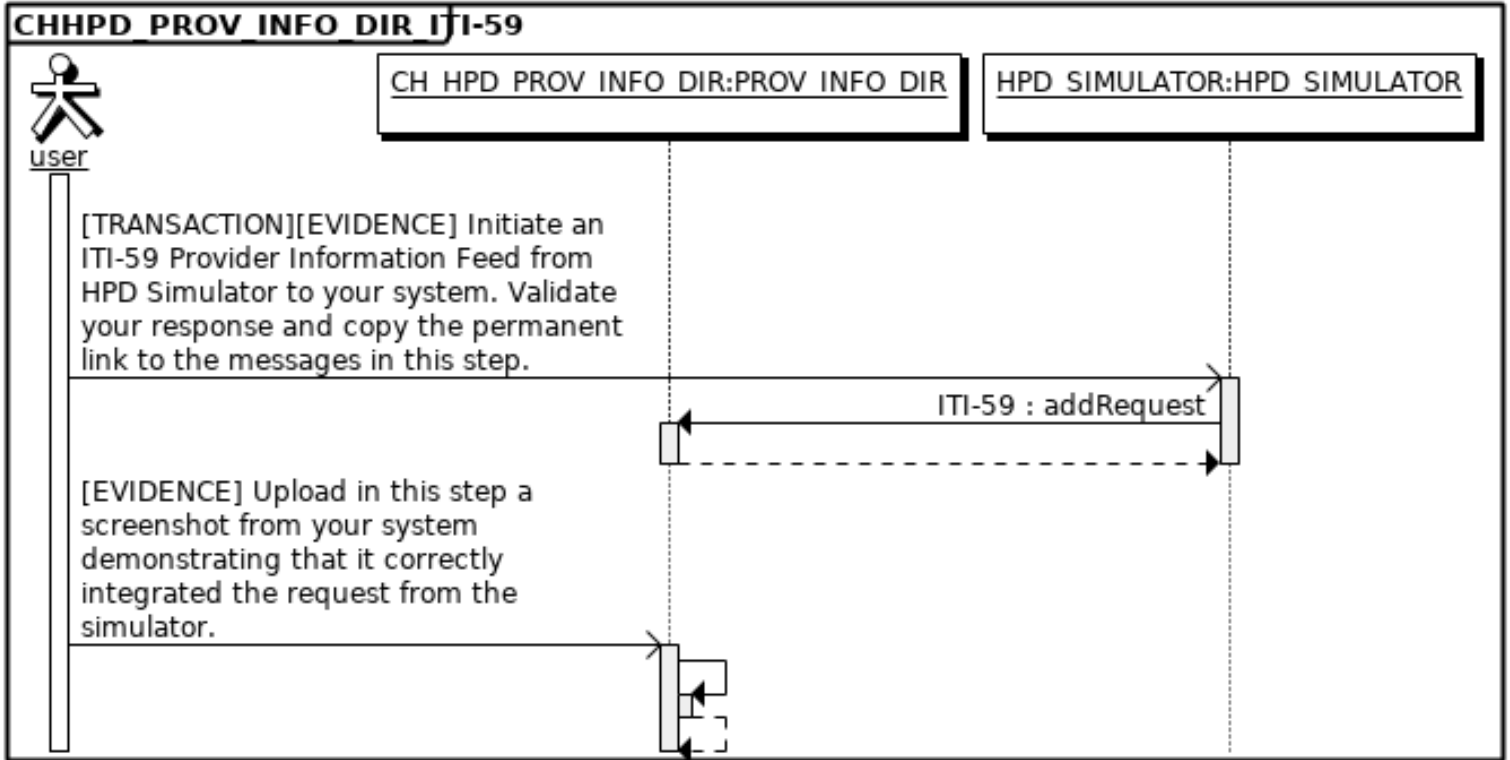
| Index | Initiator | Responder | Transaction | Message Type | Secured ? | Option | Description |
|-------|---------------|--------------------|-------------|--------------|-----------|----------|--|
| 10 | HPD_SIMULATOR | CH_HPDPROVINFO_DIR | ITI-59 | addRequest | No | Required | [TRANSACTION][EVIDENCE] Initiate an ITI-59 Provider Information Feed from HPD Simulator to your system. Validate your response and copy the permanent link to the messages in this step. |

Test Steps

| Index | Initiator | Responder | Transaction | Message Type | Secured ? | Option | Description |
|-------|----------------------|----------------------|-------------|--------------|-----------|----------|-------------|
| 20 | CH_HPDPROV_INF_O_DIR | CH_HPDPROV_INF_O_DIR | | None | No | Required | |

[EVIDENCE] Upload in this step a screenshot from your system demonstrating that it correctly integrated the request from the simulator.

Sequence Diagram



Test case #13291 CHHPD_PROV_INFO_SRC_ITI-59

Test Summary

Keyword : CHHPD_PROV_INFO_SRC_ITI-59 **Type :** conformity assessment
Name : CHHPD_PROV_INFO_SRC_ITI-59 **Peer Type :** NO_PEER_TEST
Version : 1.0 **Status :** ready
Author : wbars **Verified by :** NicolasBailliet
Date of last : 2019-09-03 11:31:37.412348 by wbars

Short Description : HPD Provider Info Feed message from Provider Info Source, sent on HPD Simulator Provider Info Directory, validated using EVSClient

Test Description

Your Provider Info source SUT is asked to initiate an ITI-59 request with HPD simulator acting as a Provider Info Directory.

You will use the Gazelle EVSClient to validate HL7v3-based messages sent by you system.

These messages are applicable across many IHE profiles. The messages you validate will depend upon the profile/actor pairs supported by your test system.

Instruction

Access the Gazelle HPD Simulator application : [HPD Simulator](#)

From the HPD Simulator user interface, select **Simulators --> Provider Information Directory --> Configuration**

Send an ITI-59 Provider Information Feed from your system to the Provider Information Directory of HPD Simulator

For each step, you are requested to provide the permanent link to the message exchanged with the simulator. Once the simulator has received the response from your system, a report is displayed at the bottom of the page. Scroll down to this section, ,

1. Click on the play icon next to the response message type to trigger the validation of the message sent by your system. We expect the outcome of the validation to be PASSED.
2. Right-click on the magnifying glass icon (last column) and copy/paste the permanent link in the test step using the "Add link" feature.
3. Upload a screenshot of the result received by your system, demonstrating that your system correctly integrates the request from the simulator

Evaluation

- The expected global result for the validation is **PASSED**.
- The SUT must have correctly integrated the request from the validator.

Test Participants

| Role in test : CH_HPDPROVINFO_SRC (SUT) | | | Option : R | Nb of instances : 1 |
|---|---------|--------|------------|---------------------|
| Actor | Profile | Option | | |
| PROV_INFO_SRC | CH:HPD | NONE | | |

| Role in test : HPD_SIMULATOR (Tool) | | | Option : R | Nb of instances : 1 |
|-------------------------------------|--|--|------------|---------------------|
|-------------------------------------|--|--|------------|---------------------|

Test Steps

| Index | Initiator | Responder | Transaction | Message Type | Secured ? | Option | Description |
|-------|--------------------|---------------|-------------|--------------|-----------|----------|--|
| 1 | CH_HPDPROVINFO_SRC | HPD_SIMULATOR | ITI-59 | addRequest | No | Required | [TRANSACTION][EVIDENCE] Initiate an ITI-59 Provider Information Feed from your system to the Provider Information Directory of HPD Simulator. Validate the response from your system and copy in this step the permanent link to the messages as well as a screenshot of the result received by your system. |

Sequence Diagram

