

Table of Contents

CHPPQ_AddDelegation_Repository_CTS	1
CHPPQ_AddDeleg_Repo_error_CTS	5
CHPPQ_POLICY_REPO_PPQ-1_ADD_CTS	10
CHPPQ_POLICY_REPO_PPQ-1_DEL_CTS	15
CHPPQ_POLICY_REPO_PPQ-1_UPD_CTS	18
CHPPQ_POLICY_REPO_PPQ-2_CTS	21
PPQ_REPO_CONF_CTS	25

Test case #14179 CHPPQ_AddDelegation_Repository

Test Summary

Keyword : CHPPQ_AddDelegation_Repository_CTS **Type :** conformity assessment
Name : CHPPQ_AddDelegation_Repository **Peer Type :** NO_PEER_TEST
Version : 1.2 **Status :** ready
Author : vhofman **Verified by :** **Not verified**
Date of last 2025-07-21 12:20:30.691883 by angelina.ker

Short Description : System acting as PPQ Repository must respond to a simulated PPQ requests aiming at adding policies in a delegation context (from a HCP to an another).

Test Description

Special Instructions

In this test case, your system acting as a PPQ Repository must respond to a simulated PPQ requests. The goal is to add several policies in the repository to extends the rights of a HCP to an another one.

The Policy Repository actor is expected to act as a X-Service provider. This test will also be used to assess this role for PPQ-1 transaction. In order to do so, you'll need to follow the instructions from this test case : [XUA_X-SERVICE-PROV_ITI-40](#)

Moreover, the Policy Repository actor is expected to act as a X-Service user when sending an AuthorizationDecision query to an ADR Provider. This test will also be used to assess this role, in case of a PPQ1 transaction. In order to do so, you'll need to follow the instructions from this test case :

[XUA_X-SERVICE-USER_ITI-40](#)

The PPQ Source Simulator will send a set of requests and verify your response in this order:

1. [INTERNAL TASK] The simulator is getting a XUA assertion before sending its requests.
2. [INTERNAL TASK] The simulator requests a deletion with a generated PolicySetId. It prevents your system from already having a PolicySet with the same id. If your repository returns an error because it doesn't know this PolicySet, it won't affect the next steps.
3. [INTERNAL TASK] The simulator requests the creation of the initial Patient PolicySet (template 201)
4. [INTERNAL TASK] The simulator requests the creation of the delegation for HCP1 (template 304)
5. **The Policy Source simulator requests the creation of the HCP1's rights (on the patient resources) to HCP 2; a 301 template is used with the start and end dates. Your Policy Repository SHALL return a success response.**
6. [INTERNAL TASK] Given your SUT's response, the simulator automatically ask for a validation to EVS Client. This step doesn't appear but causes a FAILED is your response is not compliant with the validation profile.

Test data

The following data are used:

Patient identifier: 761337610411265304^^^SPID&2.16.756.5.30.1.127.3.10.3&ISO,

HCP1 GLN: 7601002469191

HCP2 GLN: 7601002467373

Description

Before anything, configure your system to be able to test its role as X-Service Provider.

The requests will be sent to your SUT from **Gazelle Webservice Tester**. To execute this test:

1. Access [Gazelle Webservice Tester](#) and log into the application;
2. Go to the menu "Run";
3. Select the test project name **EPR CH:PPQ Repository** from the drop-down list;
4. Select the test suite **PPQ_Add_Policy_delegation_valid_case** by ticking the checkbox in front of its name;
5. Enter the URL of your system under test endpoint (shall be a secured endpoint) and eventually, change the start and end dates
6. Click on "Run" button
7. Wait for the script to complete its execution;
8. When the script stops, copy the permanent link of the execution to the corresponding test step in Gazelle Test Management

The conformance of the responses sent back by your system shall be assessed. Nevertheless, it is automatically done by the Policy Source simulator.

A PASSED result in Gazelle Webservice Tester includes an automatic DONE_PASSED from EVS Client

Evaluation

The monitor will check that you copied the link to this test instance to the corresponding test step of the test case [XUA_X-SERVICE-PROV_ITI-40](#) AND [XUA_X-SERVICE-USER_ITI-40](#).

The monitor will also check that you copied the execution permanent link.

The status of the transactions on GWT for the PPQ1 transaction must be "Passed".

Test Participants		
Role in test	Option	Nb of instances
Actor	Profile	Option
Role in test : PPQ_REPOSITORY_WITH_XUA (SUT)	Option : R	Nb of instances : 1

Test Participants

Actor	Profile	Option
X-SERV-PROV	XUA	NONE
X-SERV-USR	XUA	NONE
AUTH_DECI_CONS	CH:ADR	NONE
POLICY_REPO	CH:PPQ	NONE

Role in test : PPQ_SOURCE_SIMULATOR (Tool)

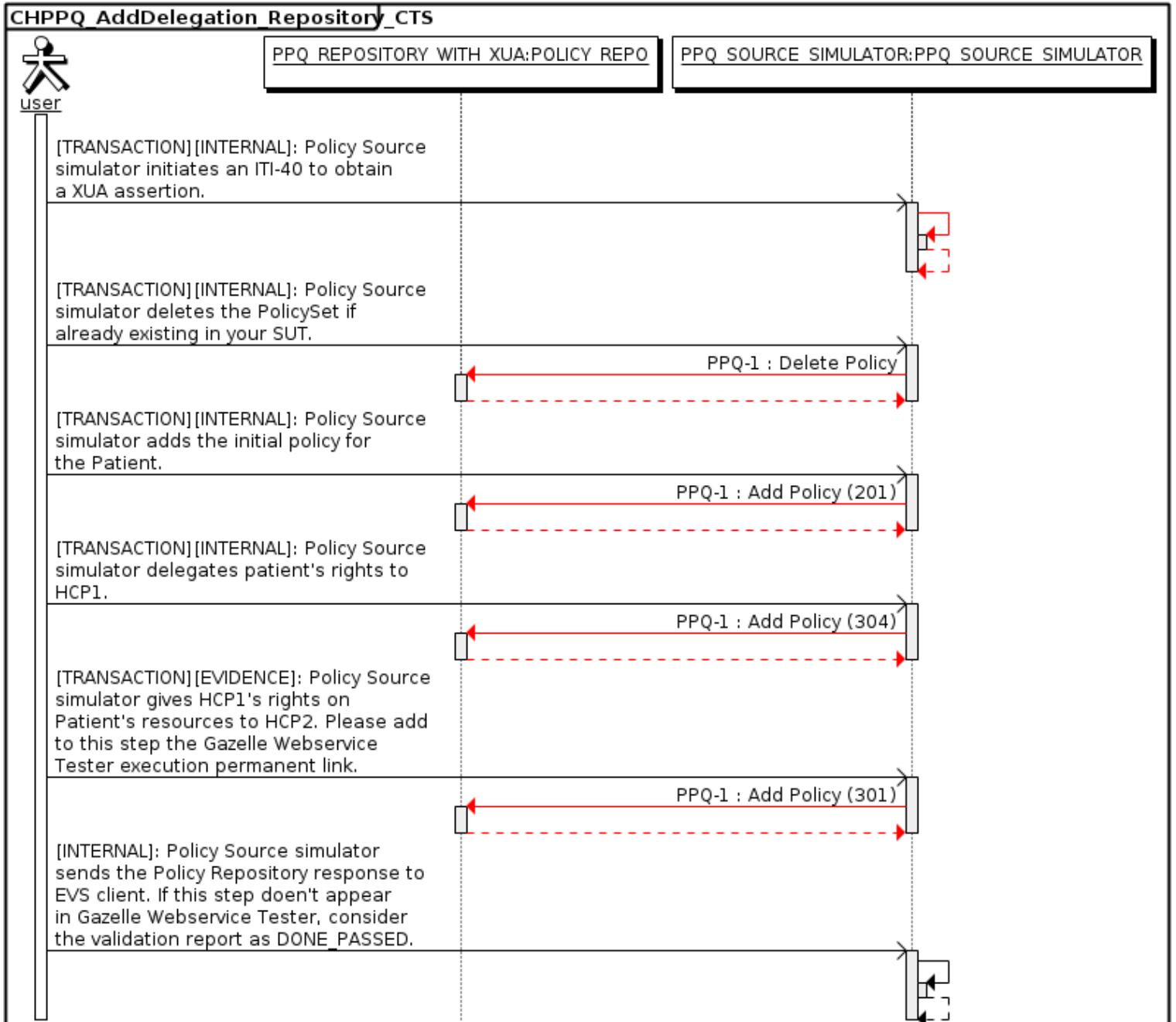
Option : R

Nb of instances : 1

Test Steps

Index	Initiator	Responder	Transaction	Message Type	Secured ?	Option	Description
10	PPQ_SOURCE_SIMULATOR	PPQ_SOURCE_SIMULATOR		ITI-40	Yes	Required	[TRANSACTION][INTERNAL]: Policy Source simulator initiates an ITI-40 to obtain a XUA assertion.
20	PPQ_SOURCE_SIMULATOR	PPQ_REPOSITORY_WITH_XUA	PPQ-1	Delete Policy	Yes	Required	[TRANSACTION][INTERNAL]: Policy Source simulator deletes the PolicySet if already existing in your SUT.
30	PPQ_SOURCE_SIMULATOR	PPQ_REPOSITORY_WITH_XUA	PPQ-1	Add Policy (201)	Yes	Required	[TRANSACTION][INTERNAL]: Policy Source simulator adds the initial policy for the Patient.
40	PPQ_SOURCE_SIMULATOR	PPQ_REPOSITORY_WITH_XUA	PPQ-1	Add Policy (304)	Yes	Required	[TRANSACTION][INTERNAL]: Policy Source simulator delegates patient's rights to HCP1.
50	PPQ_SOURCE_SIMULATOR	PPQ_REPOSITORY_WITH_XUA	PPQ-1	Add Policy (301)	Yes	Required	[TRANSACTION][EVIDENCE]: Policy Source simulator gives HCP1's rights on Patient's resources to HCP2. Please add to this step the Gazelle Webservice Tester execution permanent link.
60	PPQ_SOURCE_SIMULATOR	PPQ_SOURCE_SIMULATOR		Validation	No	Required	[INTERNAL]: Policy Source simulator sends the Policy Repository response to EVS client. If this step doesn't appear in Gazelle Webservice Tester, consider the validation report as DONE_PASSED.

Sequence Diagram



Test case #14181 CHPPQ_AddDelegation_Repository_Error_Cases

Test Summary

Keyword : CHPPQ_AddDeleg_Repo_error_CTS **Type :** conformity assessment
Name : CHPPQ_AddDelegation_Repository_Error **Peer Type :** NO_PEER_TEST
Version : 1.1 **Status :** ready
Author : vhofman **Verified by :** **Not verified**
Date of last 2025-07-16 15:09:32.82937 by vhofman

Short Description : System acting as PPQ Repository must respond to a simulated PPQ request aiming at adding wrong delegation policies.

Test Description

Special Instructions

In this test case, your system acting as PPQ Repository must respond to a simulated PPQ request. The goal is to check whether a delegation policy will be stored in the repository or not.

The Policy Repository must be configured to send Authorization Decision Queries to the Gazelle simulator ADR Provider, to do so follow the instructions from :
[PPQ_REPO_CONF](#)

The Policy Repository actor is expected to act as a X-Service provider. This test will also be used to assess this role for PPQ-1 transaction. In order to do so, you'll need to follow the instructions from this test case :

[XUA_X-SERVICE-PROV_ITI-40](#)

Moreover, the Policy Repository actor is expected to act as a X-Service user when sending an AuthorizationDecision query to an ADR Provider. This test will also be used to assess this role, in case of a PPQ1 transaction. In order to do so, you'll need to follow the instructions from this test case :

[XUA_X-SERVICE-USER_ITI-40](#)

Test data

The following data must be used:

Patient:

uid: bovie,

identifiers :

- AN204^^^IHEPAM&1.3.6.1.4.1.12559.11.20.1&ISO^AN,
- CHPAM9810^^^CHPAM&1.3.6.1.4.1.12559.11.20.1&ISO,
- 761337610435209810^^^SPID&2.16.756.5.30.1.127.3.10.3&ISO,
- CHFACILITY9810^^^CHFACILITY&1.3.6.1.4.1.12559.11.25.1.19&ISO

HCP1:

uid: rreynolds

GLN: 7601002467373

HCP2 (Just for information; you'll receive a delegation for this HCP):

uid: aandrews

GLN: 7601002469191

Description

- Before anything, configure your system to be able to test its role as X-Service Provider, X-Service User and ADR Consumer.

The requests will be sent to your SUT from Gazelle Webservice Tester. To execute this test:

1. Access [Gazelle Webservice Tester](#) and log into the application;
2. Go to the menu "Run";
3. Select the test project name **EPR CH-PPQ Repository** Case from the drop-down list;
4. Select the test suite **EPR CH:ADR-PPQ Delegation Case/PPQ_Add_DelegationPolicy error_case** by ticking the checkbox in front of its name;
5. Enter the URL of your system under test endpoint (shall be a secured endpoint)
6. Click on "Run" button
7. Wait for the script to complete its execution;
8. When the script stops, copy the permanent link of the execution to the test step in Gazelle Test Management

Evaluation

The monitor will check that you copied the link to this test instance to the corresponding test step of the test case [XUA_X-SERVICE-PROV_ITI-40](#) AND [XUA_X-SERVICE-USER_ITI-40](#).

The monitor will also check that you copied the link to the EVS Client validation for your ADR Authorization Decision query to the corresponding test step of the test case [CHADR_FOR_CONSUMER](#) (one validation is enough)

The status of the transactions on GWT for the PPQ1 transaction must be "Passed".

Test Participants

Role in test : CH_ADR_PROVIDER_SIMULATOR (Tool) **Option** : R **Nb of instances** : 1

Role in test : PPQ_REPOSITORY_WITH_XUA (SUT) **Option** : R **Nb of instances** : 1

Actor	Profile	Option
X-SERV-PROV	XUA	NONE
X-SERV-USR	XUA	NONE
AUTH_DECI_CONS	CH:ADR	NONE
POLICY_REPO	CH:PPQ	NONE

Role in test : PPQ_SOURCE_SIMULATOR (Tool) **Option** : R **Nb of instances** : 1

Test Steps

Index	Initiator	Responder	Transaction	Message Type	Secured ?	Option	Description
5	PPQ_REPOSITORY_WITH_XUA	PPQ_REPOSITORY_WITH_XUA		Configuration	No	Required	[OTHER_ACTION] : The system is configured to be able to register its audit messages.
10	PPQ_REPOSITORY_WITH_XUA	PPQ_REPOSITORY_WITH_XUA		Configuration	No	Required	[OTHER_ACTION] The Policy Repository is configured to communicate properly with the ADR provider simulator.
15	PPQ_SOURCE_SIMULATOR	PPQ_REPOSITORY_WITH_XUA	ITI-40	Provide X-User Assertion	No	Required	[TRANSACTION] : Running the project on GWT initiate an ITI-40 in parallel to the PPQ-1 request from the Policy Source simulator to the SUT
20	PPQ_SOURCE_SIMULATOR	PPQ_REPOSITORY_WITH_XUA	PPQ-1	Add Policy	No	Required	[INTERNAL] : The client simulator initiates the creation of the Patient policy, grouped with an ITI-40 from the Policy Source simulator, to the SUT
22	PPQ_SOURCE_SIMULATOR	PPQ_REPOSITORY_WITH_XUA	PPQ-1	Add Policy	No	Required	[INTERNAL] : The client simulator initiates the creation of HCP1 policy with delegation, grouped with an ITI-40 from the Policy Source simulator, to the SUT
25	PPQ_SOURCE_SIMULATOR	PPQ_REPOSITORY_WITH_XUA	PPQ-1	Add policy	No	Required	[INTERNAL] : The client simulator initiates the creation of the policy to give rights to HCP2, grouped with an ITI-40 from the Policy Source simulator, to the SUT

Test Steps							
Index	Initiator	Responder	Transaction	Message Type	Secured ?	Option	Description
30	PPQ_SOU RCE_SIMU LATOR	PPQ_REPO SITORY_WI TH_XUA	PPQ-1	Update policy	No	Required	[TRANSACTION] : The client simulator sends a UpdatePolicyRequest in the name of HCP1 to the SUT
40	PPQ_SOU RCE_SIMU LATOR	PPQ_REPO SITORY_WI TH_XUA	PPQ-1	Delete Policy	No	Required	[TRANSACTION] : The client simulator sends a DeletePolicyRequest in the name of HCP1 to the SUT
50	PPQ_REP OSITORY_ WITH_XUA	PPQ_REPO SITORY_WI TH_XUA		None	No	Required	[EVIDENCE] : The SUT proves that a link to this test instance XUA_X-SERVICE-PROV_ITI-40 and XUA_X-SERVICE-USER_ITI-40. test case has been added for the transactions and add the Gazelle Webservice Tester permanent link

Sequence Diagram



Test case #13977 CHPPQ_POLICY_REPO_PPQ-1_ADD

Test Summary

Keyword : CHPPQ_POLICY_REPO_PPQ-

Type : conformity assessment

Name : CHPPQ_POLICY_REPO_PPQ-1_ADD

Peer Type : NO_PEER_TEST

Version : 1.2

Status : ready

Author : vhofman

Verified by : **Not verified**

Date of last 2024-01-26 16:24:17.071774 by vhofman

Short Description : System acting as PPQ Repository must respond to a simulated PPQ request aiming at adding a policy in the repository.

Test Description

Special Instructions

In this test case, your system acting as PPQ Repository must respond to a simulated PPQ request. The goal is to Add a policy in the repository.

The Policy Repository must be configured to send Authorization Decision Queries to the Gazelle simulator ADR Provider, to do so follow the instructions from : [PPQ_REPO_CONF](#)

The Policy Repository actor is expected to act as a X-Service provider. This test will also be used to assess this role for PPQ-1 transaction. In order to do so, you'll need to follow the instructions from this test case :

[XUA_X-SERVICE-PROV_ITI-40](#)

Moreover, the Policy Repository actor is expected to act as a X-Service user when sending an AuthorizationDecision query to an ADR Provider. This test will also be used to assess this role, in case of a PPQ1 transaction. In order to do so, you'll need to follow the instructions from this test case :

[XUA_X-SERVICE-USER_ITI-40](#)

In addition, the Document Registry actor is also expected to act as an AuthorizationDecision Consumer. This test will also be used to assess this role, in case of an ITI-18 transaction. In order to validate the conformity of your system in this role, you'll need to follow the instructions from this test case :

[CHADR_FOR_CONSUMER](#)

You'll also need to configure your repository to work with the following patient :

Patient : **Nilesh WITTWER-CHRISTEN** (EPR-SPID : **761337610411265304^^^SPID&2.16.756.5.30.1.127.3.10.3&ISO**)
 Sender of the request (in the SAML assertion) : use either the patient Nilesh WITTWER-CHRISTEN (username **nwittwerchristen**), or the HCP Ann Andrews (username **aandrews**)

Description

- Before anything, configure your system to be able to test its role as X-Service Provider, X-Service User and ADR Consumer.

The requests will be sent to your SUT from Gazelle Webservice Tester. To execute this test:

1. Access [Gazelle Webservice Tester](#) and log into the application;
2. Go to the menu "Run";
3. Select the test project name **EPR CH:PPQ Repository** from the drop-down list;
4. Select the test suite **PPQ_Add_Policy_valid_case** by ticking the checkbox in front of its name;
5. Enter the URL of your system under test endpoint (shall be a secured endpoint)
6. Click on "Run" button
7. Wait for the script to complete its execution;
8. When the script stops, copy the permanent link of the execution to the test step in Gazelle Test Management

The conformance of the responses sent back by your system shall be assessed. From Gazelle Webservice Tester, validate the message in EVSClient. To do so:

1. Click on the play icon next to the response type;
2. You have been redirected to EVSClient, select validator: **CH:PPQ** in the EPR group and click on the "Go" button;
3. Once the page of the validator opens, select the appropriate entry in the drop-down list and click on "Validate";
4. When the validation report shows up, a pop-up raises for returning the validation report to GWT, click on "OK";

Evaluation

The monitor will check that you copied the link to this test instance to the corresponding test step of the test case [XUA_X-SERVICE-PROV_ITI-40](#) AND [XUA_X-SERVICE-USER_ITI-40](#).

The monitor will also check that you copied the link to the EVS Client validation for your ADR Authorization Decision query to the corresponding test step of the test case [CHADR_FOR_CONSUMER](#) (one validation is enough)

The status of the transactions on GWT for the PPQ1 transaction must be **"Passed"**.

The validations on EVS Client for the PPQ1 transaction must return **"Passed"**.

Test Participants

Test Participants

Role in test : CH_ADR_PROVIDER_SIMULATOR (Tool) **Option :** R **Nb of instances :** 1

Role in test : PPQ_REPOSITORY_WITH_XUA (SUT) **Option :** R **Nb of instances :** 1

Actor	Profile	Option
X-SERV-PROV	XUA	NONE
X-SERV-USR	XUA	NONE
AUTH_DECI_CONS	CH:ADR	NONE
POLICY_REPO	CH:PPQ	NONE

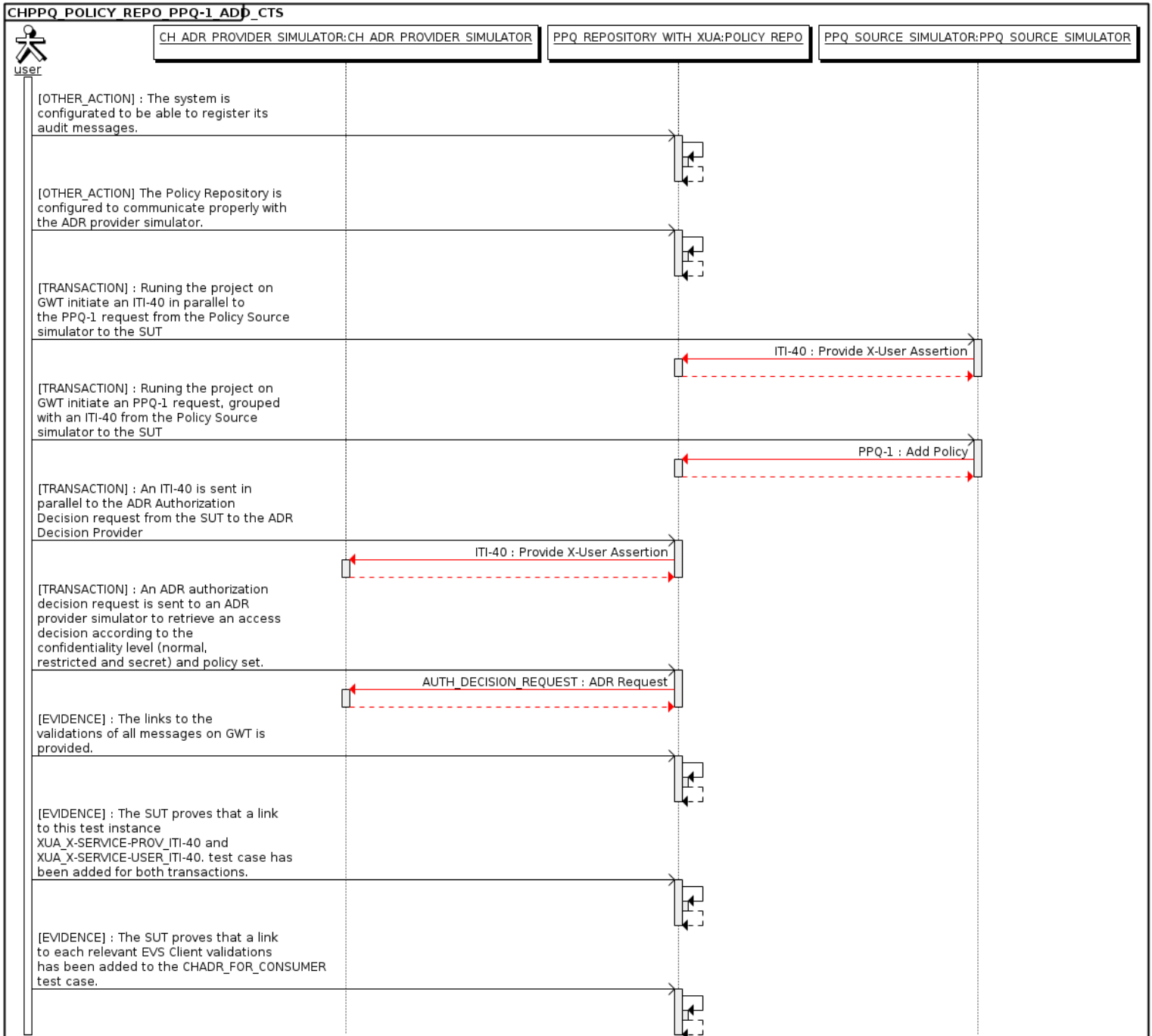
Role in test : PPQ_SOURCE_SIMULATOR (Tool) **Option :** R **Nb of instances :** 1

Test Steps

Index	Initiator	Responder	Transaction	Message Type	Secured ?	Option	Description
5	PPQ_REPOSITORY_WITH_XUA	PPQ_REPOSITORY_WITH_XUA		Configure	No	Required	[OTHER_ACTION] : The system is configured to be able to register its audit messages.
10	PPQ_REPOSITORY_WITH_XUA	PPQ_REPOSITORY_WITH_XUA		Configure	No	Required	[OTHER_ACTION] The Policy Repository is configured to communicate properly with the ADR provider simulator.
15	PPQ_SOURCE_SIMULATOR	PPQ_REPOSITORY_WITH_XUA	ITI-40	Provide X-User Assertion	Yes	Required	[TRANSACTION] : Running the project on GWT initiate an ITI-40 in parallel to the PPQ-1 request from the Policy Source simulator to the SUT
20	PPQ_SOURCE_SIMULATOR	PPQ_REPOSITORY_WITH_XUA	PPQ-1	Add Policy	Yes	Required	[TRANSACTION] : Running the project on GWT initiate an PPQ-1 request, grouped with an ITI-40 from the Policy Source simulator to the SUT
22	PPQ_REPOSITORY_WITH_XUA	CH_ADR_PROVIDER_SIMULATOR	ITI-40	Provide X-User Assertion	Yes	Required	[TRANSACTION] : An ITI-40 is sent in parallel to the ADR Authorization Decision request from the SUT to the ADR Decision Provider
25	PPQ_REPOSITORY_WITH_XUA	CH_ADR_PROVIDER_SIMULATOR	AUTH_DECISION_REQUEST	ADR Request	Yes	Required	[TRANSACTION] : An ADR authorization decision request is sent to an ADR provider simulator to retrieve an access decision according to the confidentiality level (normal, restricted and secret) and policy set.

Test Steps							
Index	Initiator	Responder	Transaction	Message Type	Secured ?	Option	Description
30	PPQ_REP OSITORY_ WITH_XUA	PPQ_REPO SITORY_WI TH_XUA		Validation	No	Required	
[EVIDENCE] : The links to the validations of all messages on GWT is provided.							
40	PPQ_REP OSITORY_ WITH_XUA	PPQ_REPO SITORY_WI TH_XUA		none	No	Required	
[EVIDENCE] : The SUT proves that a link to this test instance XUA_X-SERVICE-PROV_ITI-40 and XUA_X-SERVICE-USER_ITI-40. test case has been added for both transactions.							
50	PPQ_REP OSITORY_ WITH_XUA	PPQ_REPO SITORY_WI TH_XUA		none	No	Required	
[EVIDENCE] : The SUT proves that a link to each relevant EVS Client validations has been added to the CHADR_FOR_CONSUMER test case.							

Sequence Diagram



Test Participants

Role in test : PPQ_REPOSITORY_WITH_XUA (SUT)

Option : R

Nb of instances : 1

Actor	Profile	Option
X-SERV-PROV	XUA	NONE
X-SERV-USR	XUA	NONE
AUTH_DECI_CONS	CH:ADR	NONE
POLICY_REPO	CH:PPQ	NONE

Role in test : PPQ_SOURCE_SIMULATOR (Tool)

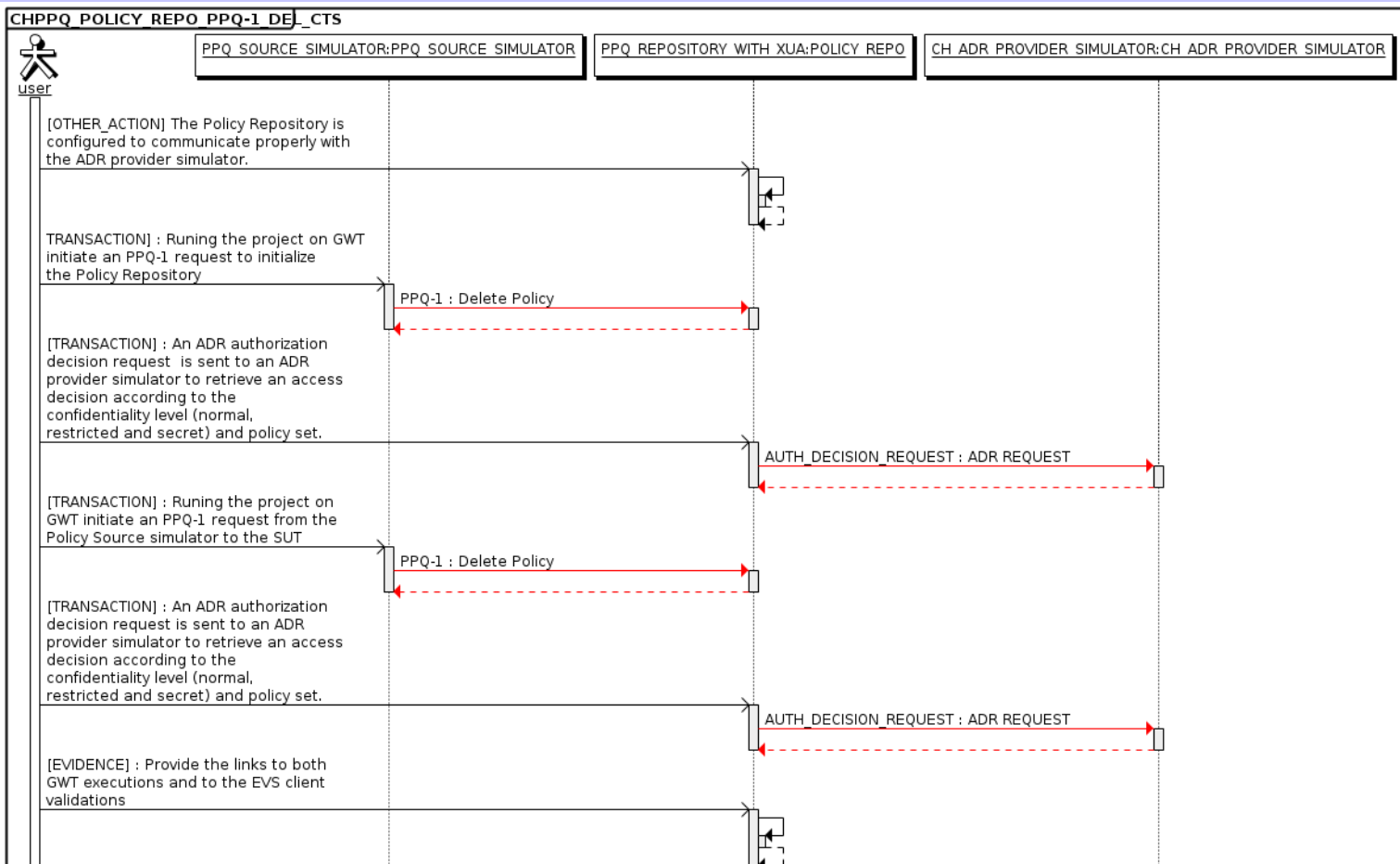
Option : R

Nb of instances : 1

Test Steps

Index	Initiator	Responder	Transaction	Message Type	Secured ?	Option	Description
10	PPQ_REPOSITORY_WITH_XUA	PPQ_REPOSITORY_WITH_XUA		Configure	No	Required	[OTHER_ACTION] The Policy Repository is configured to communicate properly with the ADR provider simulator.
15	PPQ_SOURCE_SIMULATOR	PPQ_REPOSITORY_WITH_XUA	PPQ-1	Delete Policy	Yes	Required	[TRANSACTION] : Runing the project on GWT initiate an PPQ-1 request to initialize the Policy Repository
17	PPQ_REPOSITORY_WITH_XUA	CH_ADR_PROVIDER_SIMULATOR	AUTH_DECISION_REQUEST	ADR REQUEST	Yes	Required	[TRANSACTION] : An ADR authorization decision request is sent to an ADR provider simulator to retrieve an access decision according to the confidentiality level (normal, restricted and secret) and policy set.
20	PPQ_SOURCE_SIMULATOR	PPQ_REPOSITORY_WITH_XUA	PPQ-1	Delete Policy	Yes	Required	[TRANSACTION] : Runing the project on GWT initiate an PPQ-1 request from the Policy Source simulator to the SUT
25	PPQ_REPOSITORY_WITH_XUA	CH_ADR_PROVIDER_SIMULATOR	AUTH_DECISION_REQUEST	ADR REQUEST	Yes	Required	[TRANSACTION] : An ADR authorization decision request is sent to an ADR provider simulator to retrieve an access decision according to the confidentiality level (normal, restricted and secret) and policy set.
30	PPQ_REPOSITORY_WITH_XUA	PPQ_REPOSITORY_WITH_XUA		Validate	No	Required	[EVIDENCE] : Provide the links to both GWT executions and to the EVS client validations

Sequence Diagram



Test case #13975 CHPPQ_POLICY_REPO_PPQ-1_UPD

Test Summary

Keyword : CHPPQ_POLICY_REPO_PPQ-
Name : CHPPQ_POLICY_REPO_PPQ-1_UPD
Version : 1.2
Author : vhofman
Date of last : 2024-01-26 16:24:36.921642 by vhofman

Type : conformity assessment
Peer Type : NO_PEER_TEST
Status : ready
Verified by : **Not verified**

Short Description : PPQ Repository must respond to a valid simulated PPQ UpdatePolicy Request.

Test Description

Special Instructions

In this case, your system acting as a PPQ Repository must respond to a simulated PPQ request. The goal is to Update a policy in the repository.

Policy Repository must be configured to send Authorization Decision Queries to the Gazelle simulator ADR Provider, to do so follow the instructions from : [PPQ_REPO_CONF](#)

You'll also need to configure your repository to work with the following patient :

Patient : Nilesch WITTWER-CHRISTEN (EPR-SPID : 761337610411265304^^^SPID&2.16.756.5.30.1.127.3.10.3&ISO)

Sender of the request (in the SAML assertion) : use either the patient Nilesch WITTWER-CHRISTEN (username **nwittwerchristen**), or the HCP Ann Andrews (username **aandrews**)

Description

The requests will be sent to your SUT from Gazelle Webservice Tester. To execute this test:

1. Access [Gazelle Webservice Tester](#) and log into the application;
2. Go to the menu "Run";
3. Select the test project name **EPR CH:PPQ Repository** from the drop-down list;
4. Select test suite **PPQ_Policy_Update valid_case** by ticking the checkbox in front of its name;
5. Complete the required fields for your system
6. Click on "Run" button
7. Wait for the script to complete its execution;
8. When the script stops, copy the permanent link of the execution to the test step in Gazelle Test Management
9. Repeat steps 2 to 8, but this time start the test suite **PPQ_Policy_Update invalid_case**

The conformance of the responses sent back by your system shall be assessed. From Gazelle Webservice Tester, validate the message in EVSClient. To do so:

1. Click on the play icon next to the response type;
2. You have been redirected to EVSClient, select validator: **CH:PPQ** in the EPR group and click on the "Go" button;
3. Once the page of the validator opens, select the appropriate entry in the drop-down list and click on "Validate";
4. When the validation report shows up, a pop-up raises for returning the validation report to GWT, click on "OK"

Evaluation

The global status of the Gazelle Webservice Tester executions must be **Success**.

The validations in EVSClient must be **Passed**

Test Participants

Role in test : CH_ADR_PROVIDER_SIMULATOR (Tool)	Option : R	Nb of instances : 1
--	-------------------	----------------------------

Test Participants

Role in test : PPQ_REPOSITORY_WITH_XUA (SUT)

Option : R

Nb of instances : 1

Actor	Profile	Option
X-SERV-PROV	XUA	NONE
X-SERV-USR	XUA	NONE
AUTH_DECI_CONS	CH:ADR	NONE
POLICY_REPO	CH:PPQ	NONE

Role in test : PPQ_SOURCE_SIMULATOR (Tool)

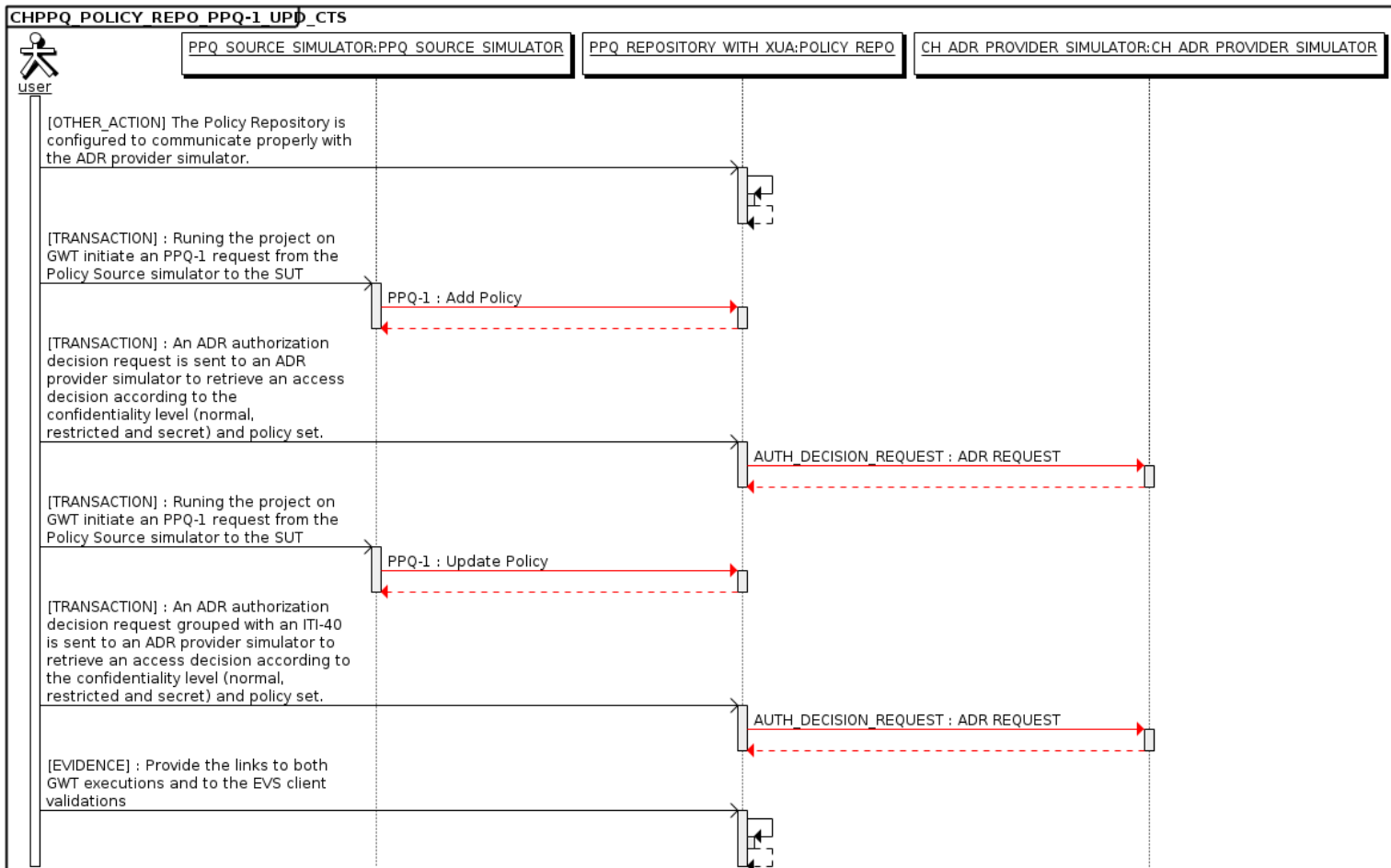
Option : R

Nb of instances : 1

Test Steps

Index	Initiator	Responder	Transaction	Message Type	Secured ?	Option	Description
10	PPQ_REPOSITORY_WITH_XUA	PPQ_REPOSITORY_WITH_XUA		Configure	No	Required	[OTHER_ACTION] The Policy Repository is configured to communicate properly with the ADR provider simulator.
15	PPQ_SOURCE_SIMULATOR	PPQ_REPOSITORY_WITH_XUA	PPQ-1	Add Policy	Yes	Required	[TRANSACTION] : Running the project on GWT initiate an PPQ-1 request from the Policy Source simulator to the SUT
18	PPQ_REPOSITORY_WITH_XUA	CH_ADR_PROVIDER_SIMULATOR	AUTH_DECISION_REQUEST	ADR REQUEST	Yes	Required	[TRANSACTION] : An ADR authorization decision request is sent to an ADR provider simulator to retrieve an access decision according to the confidentiality level (normal, restricted and secret) and policy set.
20	PPQ_SOURCE_SIMULATOR	PPQ_REPOSITORY_WITH_XUA	PPQ-1	Update Policy	Yes	Required	[TRANSACTION] : Running the project on GWT initiate an PPQ-1 request from the Policy Source simulator to the SUT
25	PPQ_REPOSITORY_WITH_XUA	CH_ADR_PROVIDER_SIMULATOR	AUTH_DECISION_REQUEST	ADR REQUEST	Yes	Required	[TRANSACTION] : An ADR authorization decision request grouped with an ITI-40 is sent to an ADR provider simulator to retrieve an access decision according to the confidentiality level (normal, restricted and secret) and policy set.
30	PPQ_REPOSITORY_WITH_XUA	PPQ_REPOSITORY_WITH_XUA		Validation	No	Required	[EVIDENCE] : Provide the links to both GWT executions and to the EVS client validations

Sequence Diagram



Test case #13974 CHPPQ_POLICY_REPO_PPQ-2

Test Summary

Keyword : CHPPQ_POLICY_REPO_PPQ-2_CTS
Name : CHPPQ_POLICY_REPO_PPQ-2
Version : 1.2
Author : vhofman
Date of last : 2024-01-26 16:25:45.924533 by vhofman

Type : conformity assessment
Peer Type : NO_PEER_TEST
Status : ready
Verified by : **Not verified**

Short Description : PPQ Repository must respond to a valid simulated PPQ XACMLPolicy Request

Test Description

Special Instructions

In this case, your system acting as PPQ Repository must respond to PPQ-2 requests to retrieve policies in the repository.

The Policy Repository actor is expected to act as a X-Service provider. This test will also be used to assess this role for PPQ-1 transaction. In order to do so, you'll need to follow the instructions from this test case :

[XUA_X-SERVICE-PROV_ITI-40](#)

Moreover, the Policy Repository actor is expected to act as a X-Service user when sending an AuthorizationDecision query to an ADR Provider. This test will also be used to assess this role, in case of a PPQ1 transaction. In order to do so, you'll need to follow the instructions from this test case :

[XUA_X-SERVICE-USER_ITI-40](#)

In addition, the Document Registry actor is also expected to act as an AuthorizationDecision Consumer. This test will also be used to assess this role, in case of an ITI-18 transaction. In order to validate the conformity of your system in this role, you'll need to follow the instructions from this test case :

[CHADR_FOR_CONSUMER](#)

You'll also need to configure your repository to work with the following patient :

Patient : **Nilesh WITTWER-CHRISTEN** (EPR-SPID : **761337610411265304^^^SPID&2.16.756.5.30.1.127.3.10.3&ISO**)

Sender of the request (in the SAML assertion) : use either the patient Nilesh WITTWER-CHRISTEN (username **nwitterchristen**), or the HCP Ann Andrews (username **aandrews**)

Description

The requests will be sent to your SUT from Gazelle Webservice Tester. To execute this test:

1. Access [Gazelle Webservice Tester](#) and log into the application;
2. Go to the menu "Run";
3. Select the test project name **EPR CH:PPQ Repository** from the drop-down list;
4. Select test suite **PPQ_XACMLPolicyQuery valid_case** by ticking the checkbox in front of its name;
5. Complete the required fields for your system
6. Click on "Run" button
7. Wait for the script to complete its execution;
8. When the script stops, copy the permanent link of the execution to the test step in Gazelle Test Management
9. Repeat steps 2 to 8, but this time start the test suite **PPQ_XACMLPolicyQuery invalid_case**

The conformance of the responses sent back by your system shall be assessed. In Gazelle Webservice Tester, [for the following test steps], validate the message in EVSClient. To do so:

1. Click on the play icon next to the response type;
2. You have been redirected to EVSClient, select validator: **CH:PPQ** in the EPR group and click on the "Go" button;
3. Once the page of the validator opens, select the appropriate entry in the drop-down list and click on "Validate";
4. When the validation report shows up, a pop-up raises for returning the validation report to GWT, click on "OK"

Evaluation

The monitor will check that you copied the link to this test instance to the corresponding test step of the test case [XUA_X-SERVICE-PROV_ITI-40](#) AND [XUA_X-SERVICE-USER_ITI-40](#).

The monitor will also check that you copied the link to the EVS Client validation for your ADR Authorization Decision query to the corresponding test step of the test case [CHADR_FOR_CONSUMER](#) (one validation is enough)

The status of the transactions on GWT must be "**Passed**".

The validations on EVS Client must return "**Passed**".

Test Participants

Role in test : CH_ADR_PROVIDER_SIMULATOR (Tool) **Option** : R **Nb of instances** : 1

Role in test : PPQ_CONSUMER_SIMULATOR (Tool) **Option** : R **Nb of instances** : 1

Role in test : PPQ_REPOSITORY_WITH_XUA (SUT) **Option** : R **Nb of instances** : 1

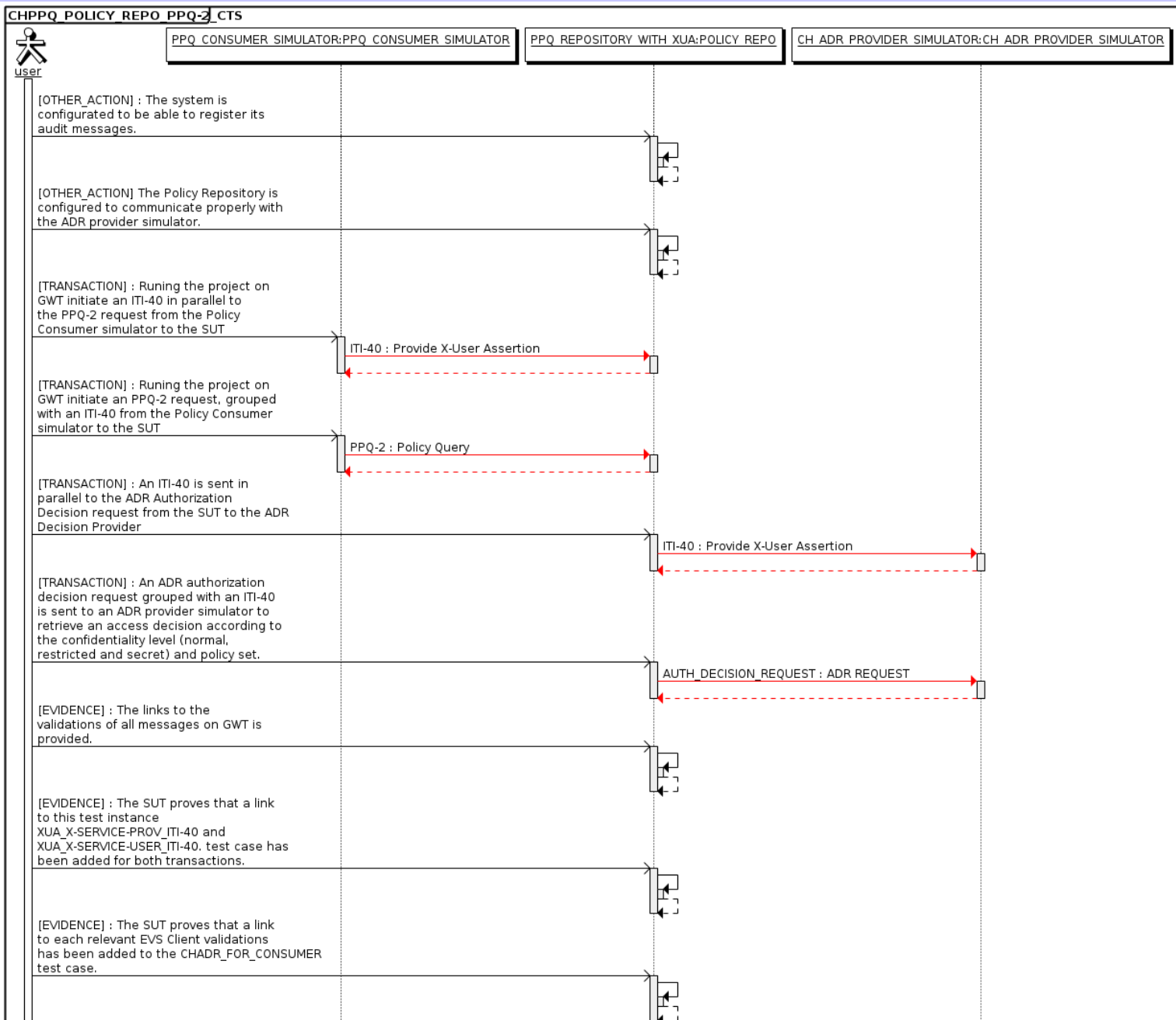
Actor	Profile	Option
X-SERV-PROV	XUA	NONE
X-SERV-USR	XUA	NONE
AUTH_DECI_CONS	CH:ADR	NONE
POLICY_REPO	CH:PPQ	NONE

Test Steps

Index	Initiator	Responder	Transaction	Message Type	Secured ?	Option	Description
5	PPQ_REPOSITORY_WITH_XUA	PPQ_REPOSITORY_WITH_XUA		Configure	No	Required	[OTHER_ACTION] : The system is configured to be able to register its audit messages.
10	PPQ_REPOSITORY_WITH_XUA	PPQ_REPOSITORY_WITH_XUA		Configure	No	Required	[OTHER_ACTION] The Policy Repository is configured to communicate properly with the ADR provider simulator.
15	PPQ_CONSUMER_SIMULATOR	PPQ_REPOSITORY_WITH_XUA	ITI-40	Provide X-User Assertion	Yes	Required	[TRANSACTION] : Running the project on GWT initiate an ITI-40 in parallel to the PPQ-2 request from the Policy Consumer simulator to the SUT
20	PPQ_CONSUMER_SIMULATOR	PPQ_REPOSITORY_WITH_XUA	PPQ-2	Policy Query	Yes	Required	[TRANSACTION] : Running the project on GWT initiate an PPQ-2 request, grouped with an ITI-40 from the Policy Consumer simulator to the SUT
22	PPQ_REPOSITORY_WITH_XUA	CH_ADR_PROVIDER_SIMULATOR	ITI-40	Provide X-User Assertion	Yes	Required	[TRANSACTION] : An ITI-40 is sent in parallel to the ADR Authorization Decision request from the SUT to the ADR Decision Provider
25	PPQ_REPOSITORY_WITH_XUA	CH_ADR_PROVIDER_SIMULATOR	AUTH_DECISION_REQUEST	ADR REQUEST	Yes	Required	[TRANSACTION] : An ADR authorization decision request grouped with an ITI-40 is sent to an ADR provider simulator to retrieve an access decision according to the confidentiality level (normal, restricted and secret) and policy set.

Test Steps							
Index	Initiator	Responder	Transaction	Message Type	Secured ?	Option	Description
30	PPQ_REP OSITORY_ WITH_XUA	PPQ_REPO SITORY_WI TH_XUA		Validate	No	Required	
[EVIDENCE] : The links to the validations of all messages on GWT is provided.							
40	PPQ_REP OSITORY_ WITH_XUA	PPQ_REPO SITORY_WI TH_XUA		none	No	Required	
[EVIDENCE] : The SUT proves that a link to this test instance XUA_X-SERVICE-PROV_ITI-40 and XUA_X-SERVICE-USER_ITI-40. test case has been added for both transactions.							
50	PPQ_REP OSITORY_ WITH_XUA	PPQ_REPO SITORY_WI TH_XUA		none	No	Required	
[EVIDENCE] : The SUT proves that a link to each relevant EVS Client validations has been added to the CHADR_FOR_CONSUMER test case.							

Sequence Diagram



Test case #13970 PPQ_REPO_CONF

Test Summary

Keyword : PPQ_REPO_CONF_CTS
Name : PPQ_REPO_CONF
Version : 1.0
Author : vhofman
Date of last : 2024-01-26 16:39:26.87369 by vhofman

Type : conformity assessment
Peer Type : NO_PEER_TEST
Status : ready
Verified by : **Not verified**

Short Description : Configuration and data feed for the PPQ Repository

Test Description

Special Instructions

This test case shall be executed as the first test for the PPQ Repository because it gives guidance to the user on how to configure his/her registry.

Description

To integrate the Policy Repository to ADR Provider :

For each transaction that will be received by the Policy Repository, a CH:ADR Authorization Decision Query is expected from the Document Registry to an ADR Provider. In response to the request received, the action requested should be performed or not according to the Authorization Decision response. The **Policy Repository MUST be configured to send Authorization Decision Queries to the Gazelle simulator ADR Provider.**

Gazelle ADR Provider service => <https://ehealthsuisse.ihe-europe.net:10443/adr-provider?wsdl> (URL secured with mutual authentication, not displayable in a web browser)

Simulator documentation => <https://ehealthsuisse.ihe-europe.net/gazelle-documentation/EPR-ADR-Simulator/user.html>

Evaluation

No formal evaluation is expected for this test, the next tests will demonstrate that you have correctly configured your repository

Test Participants

Role in test : PPQ_REPOSITORY_WITH_XUA (SUT)			Option : R	Nb of instances : 1
Actor	Profile		Option	
X-SERV-PROV	XUA		NONE	
X-SERV-USR	XUA		NONE	
AUTH_DECI_CONS	CH:ADR		NONE	
POLICY_REPO	CH:PPQ		NONE	

Test Steps

Index	Initiator	Responder	Transaction	Message Type	Secured ?	Option	Description
-------	-----------	-----------	-------------	--------------	-----------	--------	-------------

Sequence Diagram

