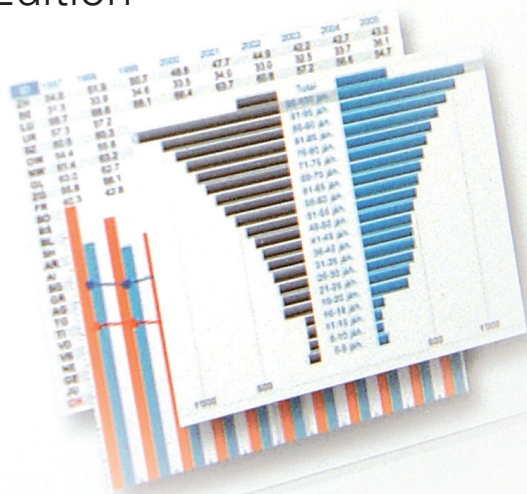


Statistical Data on Health and Accident Insurance

2010 Edition



 Schweizerische Eidgenossenschaft
Confédération suisse
Confederazione Svizzera
Confederaziun svizra
Swiss Confederation

Federal Department of Home Affairs FDHA
Federal Office of Public Health FOPH

Sources

- Health Expenditures in Selected Countries: OECD Health Data 2010, as of October
- Health Care Financing (POV health insurance premiums): Statistik der obligatorischen Krankenversicherung, T 9.06
- Compulsory Health Insurance Indicators: Statistik der obligatorischen Krankenversicherung, T 1.01, 1.02, 1.13, 2.21, 3.12, 4.01, 4.07, 11.13
- Health Insurance Premiums and Costs: Statistik der obligatorischen Krankenversicherung, T 1.01, 1.02, 2.12, 3.13
- Cost Categories: Statistik der obligatorischen Krankenversicherung, T 1.01, 2.18, 2.19
- Accident Insurance: FSIO, Statistique des assurances sociales suisses, AA 1.3
- In-Patient Service Providers and Home Nursing Services: Statistik der obligatorischen Krankenversicherung, T 2.16, 2.18, 9.21; FSO, Statistik der sozialmedizinischen Institutionen, T 14.4.3.0.1, 14.4.3.0.2, Standard Table 4A; FSO, Spitex Statistik, T7.7; FSO, Hospital Statistics, T 14.3.2.1, 14.3.2.2

Links to further information (only in German and French)

Health insurance

Time series and data archive: www.bag.admin.ch/pyramiden

Latest health insurance statistics data, continuously updated: www.bag.admin.ch/kvstat

Monitoring of ongoing cost development: www.bag.admin.ch/kmt

Service providers

Federal Statistical Office: www.bfs.admin.ch Topic 14 (Health)

Key figures and quality indicators of Swiss hospitals: www.bag.admin.ch/kvspi

Summary statistics

Health care costs: www.bfs.admin.ch Topic 14 (Health)

Swiss Social Insurance Statistics: www.bsv.admin.ch

Publisher: Federal Office of Public Health

Publication Date: 02-2011

Editor: Mathematics and Statistics Section, KUV

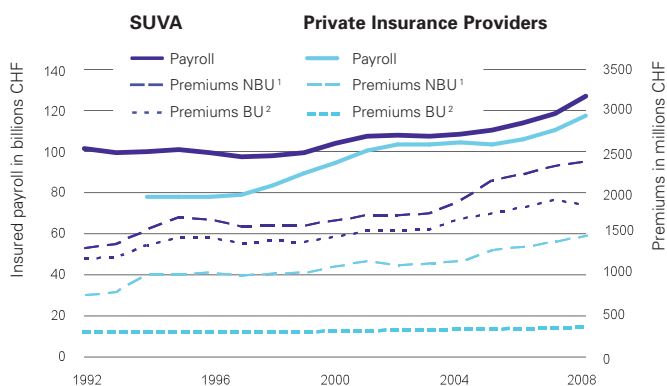
Information: KUV-SM@bag.admin.ch

Supplier: www.publicationsfederales.ch



Accident Insurance (SUVA and Private Insurance Providers)

Figures in millions CHF	1999	2008	2009	Δ08/09
Total revenue	6,287	3,975	8,454	+112.7%
of which premiums	4,485	6,298	6,152	-2.3%
return on capital	1,516	-2,743	1,905	...
Total expenditure	4,359	5,742	5,967	+3.9%
of which short-term benefits	2,356	3,084	3,226	+4.6%
- Medical expenses	1,074	1,500	1,567	+4.5%
- Daily allowances	1,281	1,583	1,659	+4.8%
long-term benefits	1,362	1,854	1,919	+3.5%
administrative costs	521	651	672	+3.2%
accident prevention	115	151	145	-4.0%
Net creation of provisions	1,533	549	1,466	+167.0%
Operating result	73	292	188	-35.6%
Provisions/Reserves (31 Dec.)	25,395	39,143	41,382	+5.7%



¹ Non-occupational accident insurance | ² Occupational accident insurance

In-Patient Service Providers and Home Nursing Services

	2007	2008	2009
Gross benefits (in-patient, compulsory HI), m CHF	6,903	7,106	7,402
per insured, CHF	916	933	960
of which hospitals, m CHF	5,137	5,258	5,481
per insured, CHF	682	690	711
of which nursing homes, m CHF	1,707	1,784	1,858
per insured, CHF	226	234	241
Hospital days (compulsory HI), in 1,000s	11,706	11,790	11,967
of which children (ages 0 to 18), in 1,000s	552	470	512
of which women (over 18 years), in 1,000s	6,310	6,435	6,480
of which maternity, in 1,000s	534	520	531
Hospital days/admission, days	9.5	9.2	9.3
Clients in nursing homes, number	132,472	134,663	137,188
of which women, number	93,476	95,372	97,072
Treatment days in nursing homes, in 1,000s	28,524	29,095	29,606
Home nursing clients (benefits of HI), number	156,312	158,560	162,735
Treatment hours per client, hours	48	49	50

	Hospitals	Beds	Discharges
Specialist hospitals	72	3,731	103,651
Rehabilitation hospitals	53	4,236	56,077
Psychiatric hospitals	59	7,608	60,551
General hospitals basic service	100	9,854	432,134
General hospitals central service	29	14,111	584,247
Total 2009 (number)	313	39,539	1,236,660

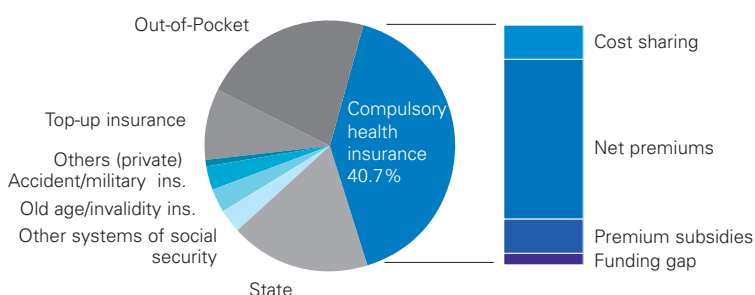
Health Expenditures in Selected Countries

	Percentage of GDP		CHF per person ¹		
	1998	2008	1998	2008	Ø98-2008
Great Britain	6.7	8.7	2,927	5,140	+5.8%
Spain	7.3	9.0	2,597	4,768	+6.3%
Italy	7.7	9.1	3,444	4,715	+3.2%
Sweden	8.2	9.4	3,723	5,700	+4.4%
Austria	10.0	10.5	4,891	6,522	+2.9%
Germany	10.2	10.5	4,660	6,140	+2.8%
Switzerland	10.1	10.7	5,600	7,600	+3.1%
France	10.1	11.2	4,344	6,071	+3.4%
United States	13.4	16.0	7,958	11,814	+4.0%

¹ Adjusted for purchasing power parity per the OECD purchasing power parities for GDP

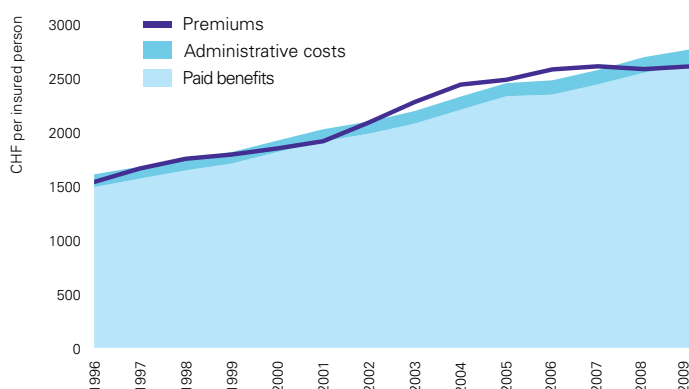
Health Care Financing 2008

(POV health insurance premiums)



Total: CHF 58.5 billion

Health Insurance: Premiums and Costs



Paid Benefits (PB) and Premiums (Pr)

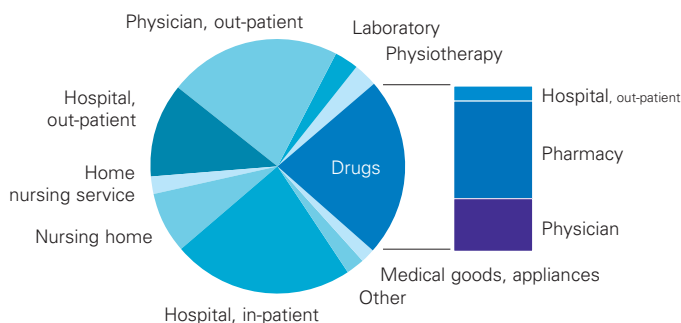
	in CHF per person and month (2009)							
	PB	Pr	PB	Pr	PB	Pr		
AI	145	151	LU	187	181	NE	226	244
NW	166	156	GL	187	184	JU	227	223
OW	172	162	GR	191	188	BL	237	227
AR	172	165	AG	197	198	BE	237	230
UR	180	163	VS	198	195	VD	244	249
ZG	182	177	FR	204	199	TI	249	259
SG	182	180	SH	207	208	GE	283	290
SZ	185	178	SO	210	203	BS	314	303
TG	186	193	ZH	216	213	CH	219	218

Compulsory Health Insurance: Indicators

	1999	2008	2009	Δ08/09
Insured, in 1,000s	7,271	7,616	7,709	+1.2%
Premiums due, m CHF	13,034	19,692	20,125	+2.2%
Ø per adult, CHF/year	2,136	3,026	3,050	+0.8%
Ø per child, CHF/year	603	803	803	-0.4%
Premium subsidy, m CHF	2,690	3,398	3,542	+4.2%
Share of central government (%)	66.9	52.4	51.2	...
Beneficiaries, in 1,000s	2,334	2,249	2,355	+4.7%
Share of insured (%)	32.6	29.5	30.5	...
Subsidy per recipient, CHF/year	1,152	1,511	1,504	-0.5%
Paid benefits, m CHF	12,431	19,431	20,274	+4.3%
as percentage of premiums	95.4	98.7	100.7	...
Ø per adult, CHF/year	2,136	2,968	3,059	+3.1%
Ø per child, CHF/year	566	832	866	+4.1%
Administrative costs ¹ , m CHF	854	1,107	1,061	-4.2%
per insured, CHF/year	117	145	138	-5.3%
Share of expenditures (%)	6.4	5.4	5.0	...
Total operating result, m CHF	-49	-755	-472	...
Reserves per 31 Dec., m CHF	3,077	3,252	2,863	-12.0%

¹ 1999 incl. depreciations

Health Insurance: Cost Categories (2009)



Cost category	Gross benefits ³ per person per year	2008-2009 (change)	1999-2009 (change/year)
Hospital, in-patient ¹	711	+3.0%	+3.7%
Nursing home	241	+2.9%	+4.1%
Home nursing service	69	+5.8%	+7.9%
Hospital, out-patient	379	+4.4%	¹ +8.2%
Physician, out-patient	678	+1.2%	+2.7%
Laboratory	90	-0.5%	+4.7%
Physiotherapy	77	+2.2%	+2.5%
Drugs total	699	+3.7%	² +4.6%
of which physician	220	+3.6%	+4.5%
pharmacy	407	+2.6%	+4.7%
hospital, out-patient	72	+11.2%	...
Medical goods and appliances	51	+3.4%	+11.5%
Other	75	+3.0%	+1.3%
Total gross benefits³	3,069	+2.9%	+4.3%
of which cost sharing	439	+1.6%	+3.8%

¹ incl. drugs | ² no drugs, hospital out-patient

³ incl. cost sharing (as far as statistically recorded)